

PLAT AND RECORD

Of a Survey on Section 9 T 1 R 11 E. of the 4 P. M. in Newark Township

Rock County, Wisconsin, made January the 6th 1882

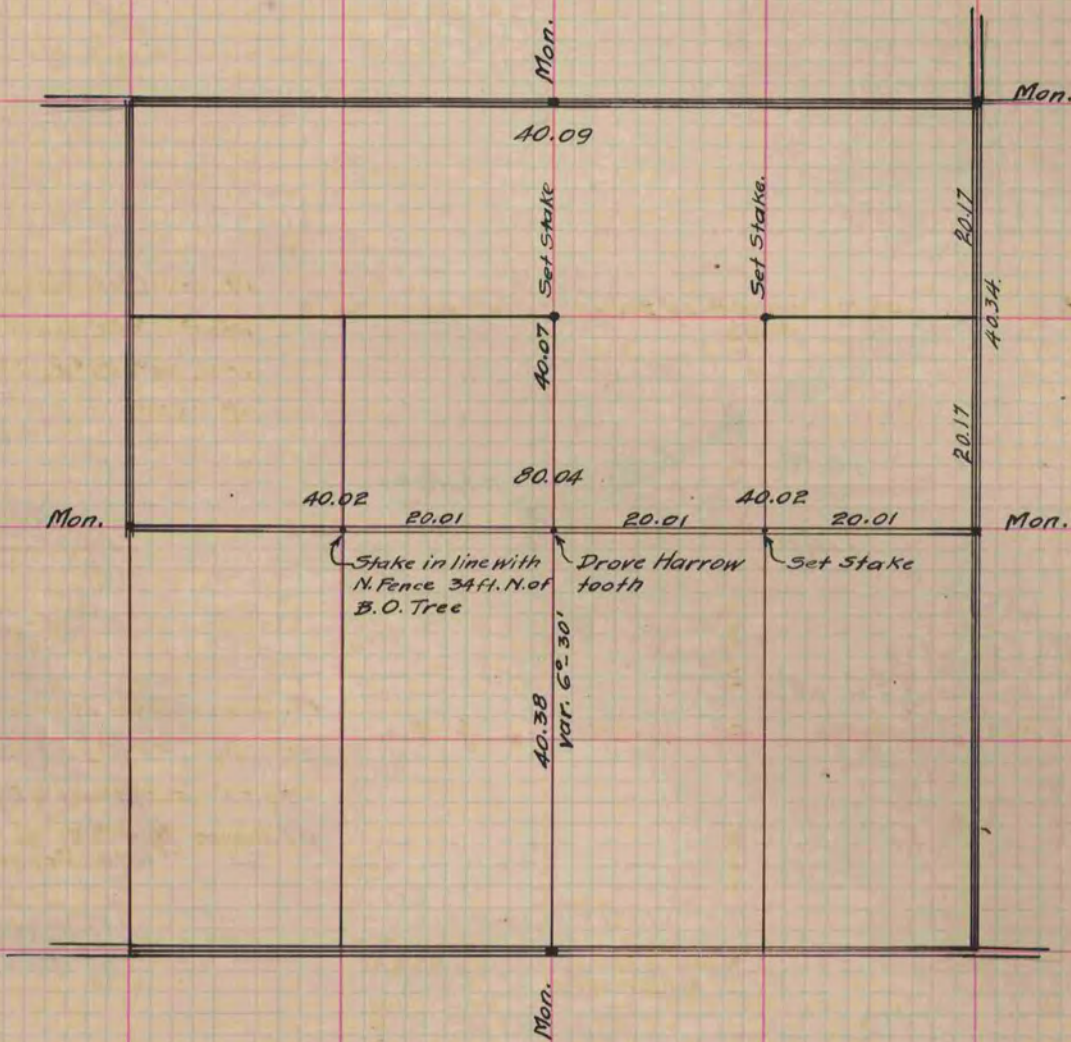
I hereby certify that the following is a correct record of said survey as made by me.

COUNTY BUILDING
CITY OF JANESVILLE

(Signed) J. A. Holmes
R.H.B

County Surveyor.

Sec. 9. Newark



The above is a record and a plat of a survey made by me on Section Nine in Newark. Jan. 6th. 1882

J. A. Holmes Co. Surveyor

Copied from P. 282 Vol. 2 County Surveyors Record.