

# PLAT AND RECORD

**MICROFILMED**

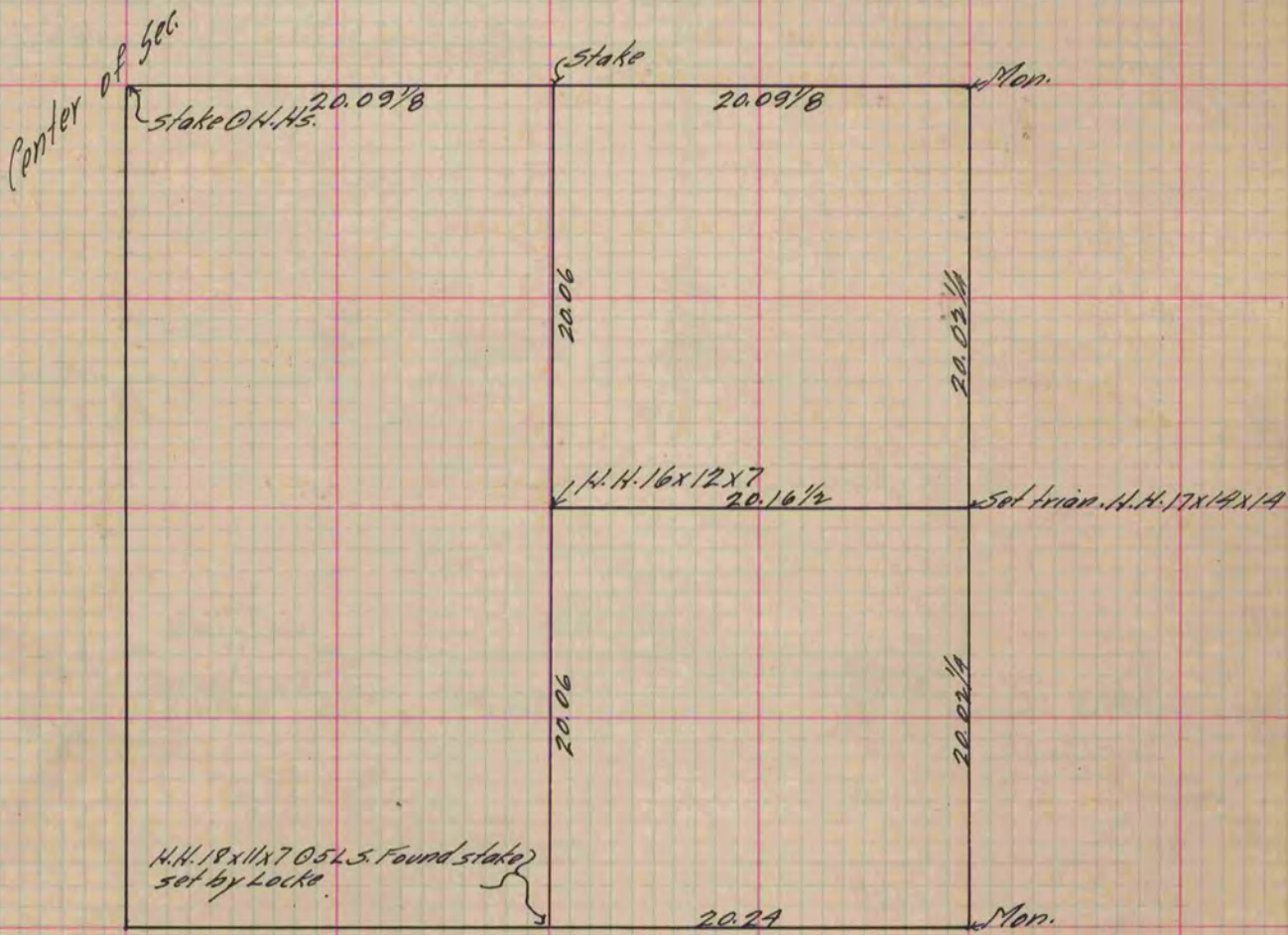
COUNTY BUILDING  
CITY OF JANESVILLE

Of a Survey on <sup>SE 1/4</sup> Section 10 T 3 R 13 E. of the 4 P. M. in Harmony Township

Rock County, Wisconsin, made November the 5 1890

I hereby certify that the following is a correct record of said survey as made by me.

(Signed) O. G. Bleedorn Dep.  
R. H. B. County Surveyor.



Copied from P. 350 Vol 2 County Surveyor's Record.