

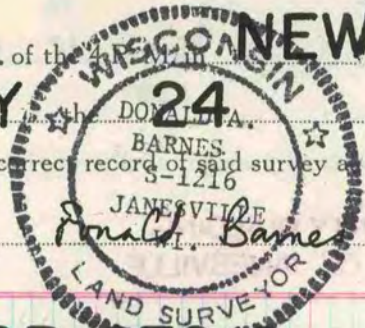
PLAT AND RECORD

VOL. 6

Of a Survey on Section 12 T 1 R 11 E. of the NEWARK Township

Rock County, Wisconsin, made FEBRUARY 24 19 81

I hereby certify that the following is a correct record of said survey as made by me.



COUNTY BUILDING CITY OF JANESVILLE

County Surveyor.

N 1/4 COR SEC 12

LAND ON THE NORTH & SOUTH SIDE OF RD INDICATES LARGE ROAD CUTS. DUG 2X4 HOLE & FOUND NOTHING. SET ALUM MON. COLLINS REMONUMENTATION NOTES INDICATES THE CORNER IS NOT ON LINE WITH THE NE & NW CORNERS. TO ESTABLISH THE E/W POSITION OF THE CORNER I USED COLLINS RECORD DISTANCE FOR PRORATION. TO ESTABLISH THE N/S POSITION I USED LEE'S RECORD DISTANCE FOR PRORATION & MEASURED FROM THE E/W CENTERLINE OF THE SECTION. THIS WAS IN HARMONY WITH OCCUPATION LINE AT THE E 1/16TH CORNER OF THE NW 1/4.

MICROFILMED

