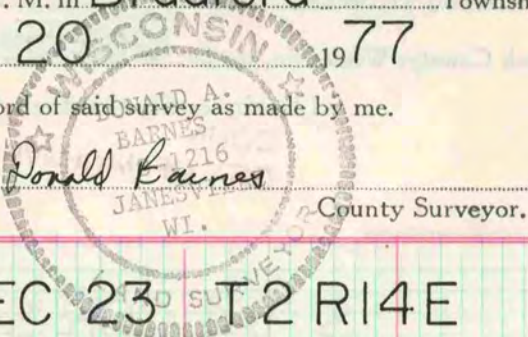


VOL. 5 PLAT AND RECORD

COUNTY BUILDING
CITY OF JANESVILLE

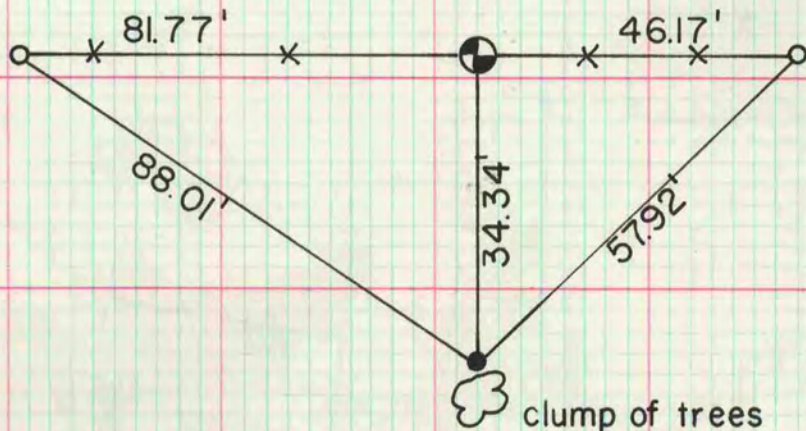
Of a Survey on Section 23 T 2 R 14 E. of the 4 P. M. in Bradford Township
Rock County, Wisconsin, made October the 20 1977

I hereby certify that the following is a correct record of said survey as made by me.



E 1/4 COR SEC 23 T2 R14E

FD. LIMESTONE 16" X 9" X 2" WITH LIMESTONE ON NORTH & SOUTH SIDE. 1' DEEP
SET ALUM. MON.



x FD 2" IP
x S 1/16 COR NE 1/4
E 1/4 COR
(RUGER 1874) REC 1312.4/ EDM 1315.44

- G-1 MON. WITH CAP
- 1" X 24" I.P.

MICROFILMED