

PLAT AND RECORD VOL. 5

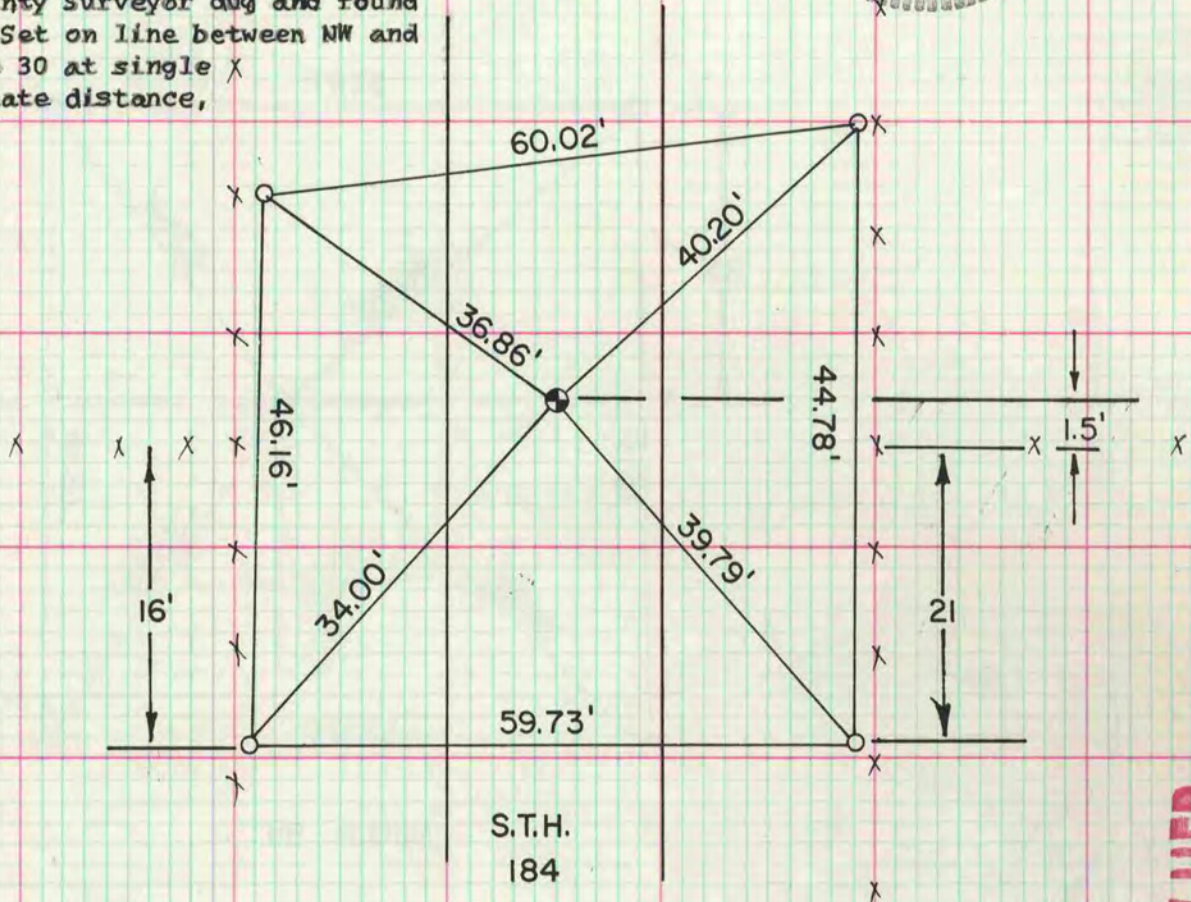
325

Of a Survey on Section 30 T 3 N R 12 E. of the 4 P. M. in JANESVILLE Township
 Rock County, Wisconsin, made Sept 8, 1977

I hereby certify that the following is a correct record of said survey as made by me,
COUNTY BUILDING CITY OF JANESVILLE



W 1/4 cor sec 30-3-12
 Former County Surveyor dug and found nothing. Set on line between NW and SW cor sec 30 at single proportionate distance,



MICROFILMED

NW cor sec 30 N 256,816.26 *
 E 2,233,718.28 * (State Plane Coordinates)

W 1/4 cor sec 30 N 1-09-39 W *
 5352.50 *

SW cor sec 30 N 251,479.39 *
 E 2,236,302.72 * (State Plane Coordinates)

2676.29' (vertical distance between NW and W 1/4 cor)

2676.29' (vertical distance between W 1/4 cor and SW cor)

465.19 DAB 2/12/80

3,826.71

* = information supplied by Wisconsin Power and Light Co.