

MICROFILMED PLAT AND RECORD

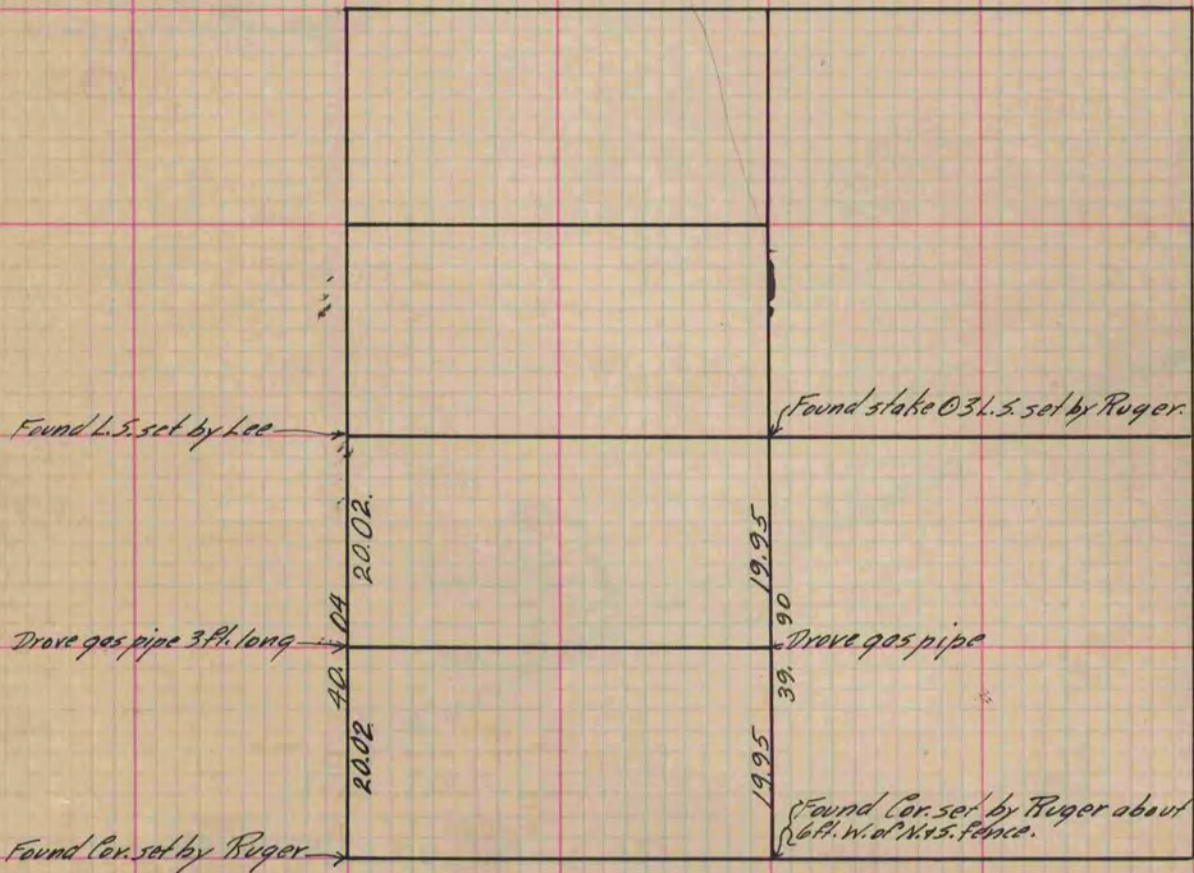
Of a Survey on Section 13 T 2 R 12 E. of the 4 P. M. in Rock Township

Rock County, Wisconsin, made May the 15 1890

I hereby certify that the following is a correct record of said survey as made by me.

COUNTY BUILDING
CITY OF JANESVILLE

(Signed) O. G. Bleedorn Dep.
R. H. B. County Surveyor.



Copied from P. 349 Vol. 2 County Surveyor's Record