

PLAT AND RECORD

Of a Survey on Section 11 T 4N R 13 E. of the 4 P. M. in MILTON Township

Rock County, Wisconsin, made JULY the 19 1967

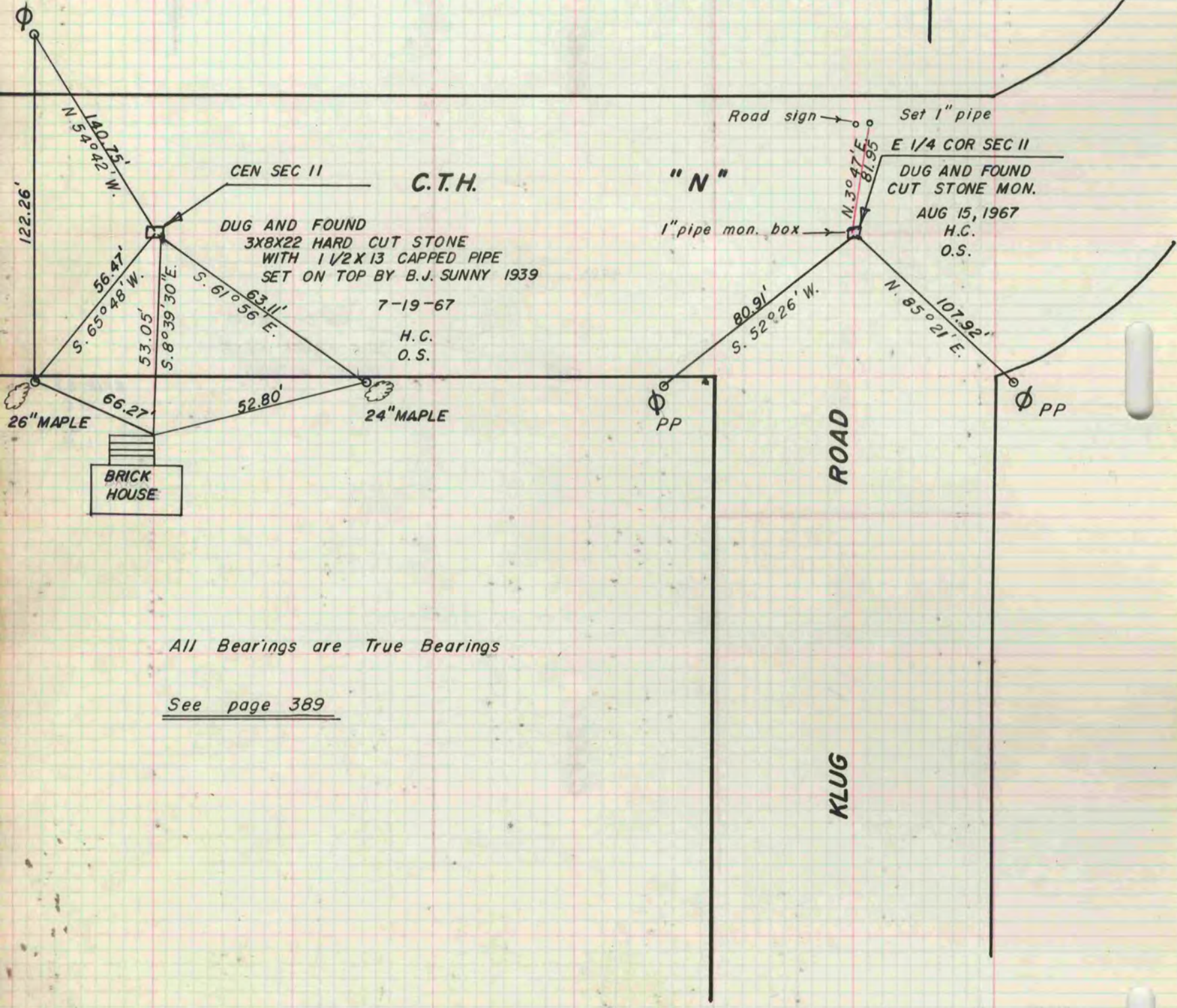
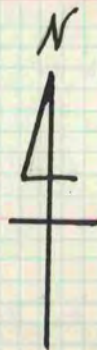
I hereby certify that the following is a correct record of said survey as made by me.

MICROFILMED

R.H. Batts

County Surveyor.

COUNTY BUILDING
CITY OF JANESVILLE



All Bearings are True Bearings

See page 389