

MICROFILMED

PLAT AND RECORD

COUNTY BUILDING
CITY OF JANESVILLE

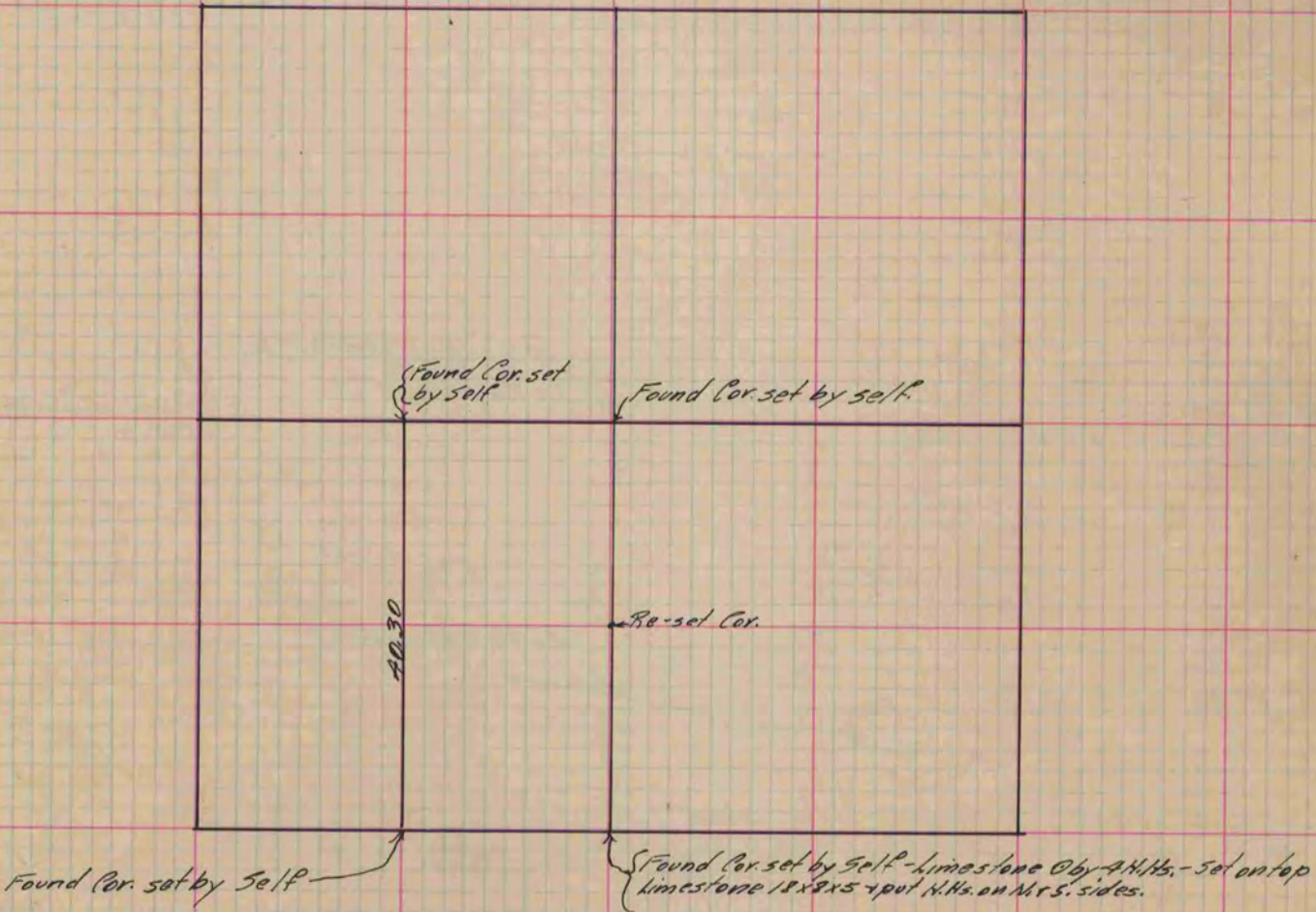
Of a Survey on Section 27 T 3 R 12 E. of the 4 P. M. in Janesville Township

Rock County, Wisconsin, made November the 6th 1882

I hereby certify that the following is a correct record of said survey as made by me.

(Signed) Edward Ruger
R.H.B.

County Surveyor.



Copied from P. 321 Vol. 2 County Surveyor's Record.