

# PLAT AND RECORD

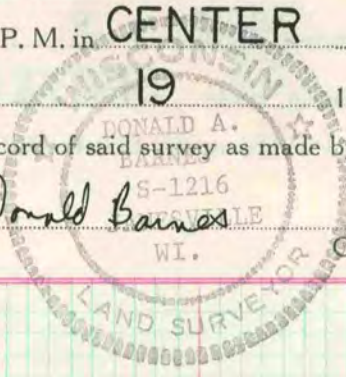
COUNTY BUILDING  
CITY OF JANESVILLE

Of a Survey on Section 16 T 3 R 11 E. of the 4 P. M. in CENTER Township

Rock County, Wisconsin, made SEPTEMBER the 19 19 78

I hereby certify that the following is a correct record of said survey as made by me.

*Donald Barnes*



County Surveyor.

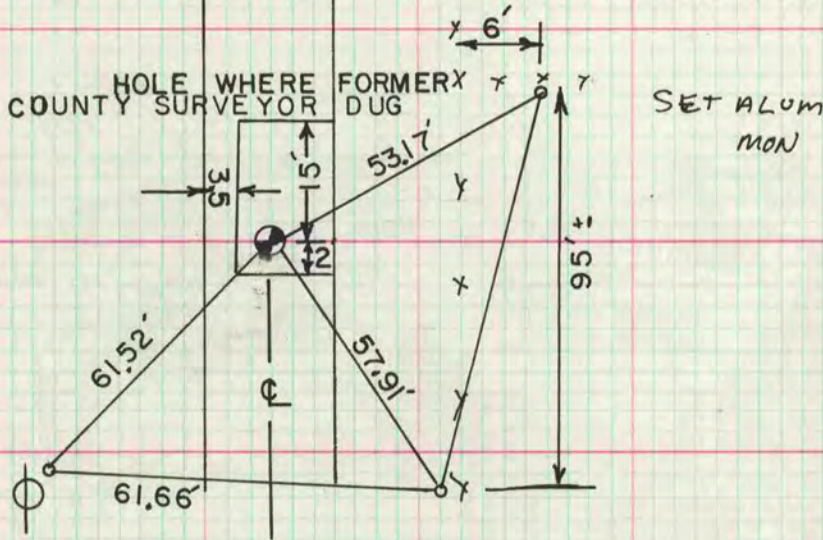
## CENTER OF SEC 16

B. KIENBAUM STATED THE CENTER WAS ESTABLISHED BY PROJECTING THE SOUTH 1/16th CORNER OF THE NE 1/4 AND THE E 1/4 CORNER AT SINGLE PROPORTIONATE DISTANCE. THIS WAS IN HARMONY WITH WITH OCCUPATION. HE DID NOT RE-EXCAVATE FOR THE CORNER BECAUSE THE PREVIOUS EXCAVATION INDICATED THE LAND HAD BEEN CUT FOR ROAD CONSTRUCTION.

### SI/4 COR SEC 16

state plane coordinates 2,214,930.58; 261,948.37

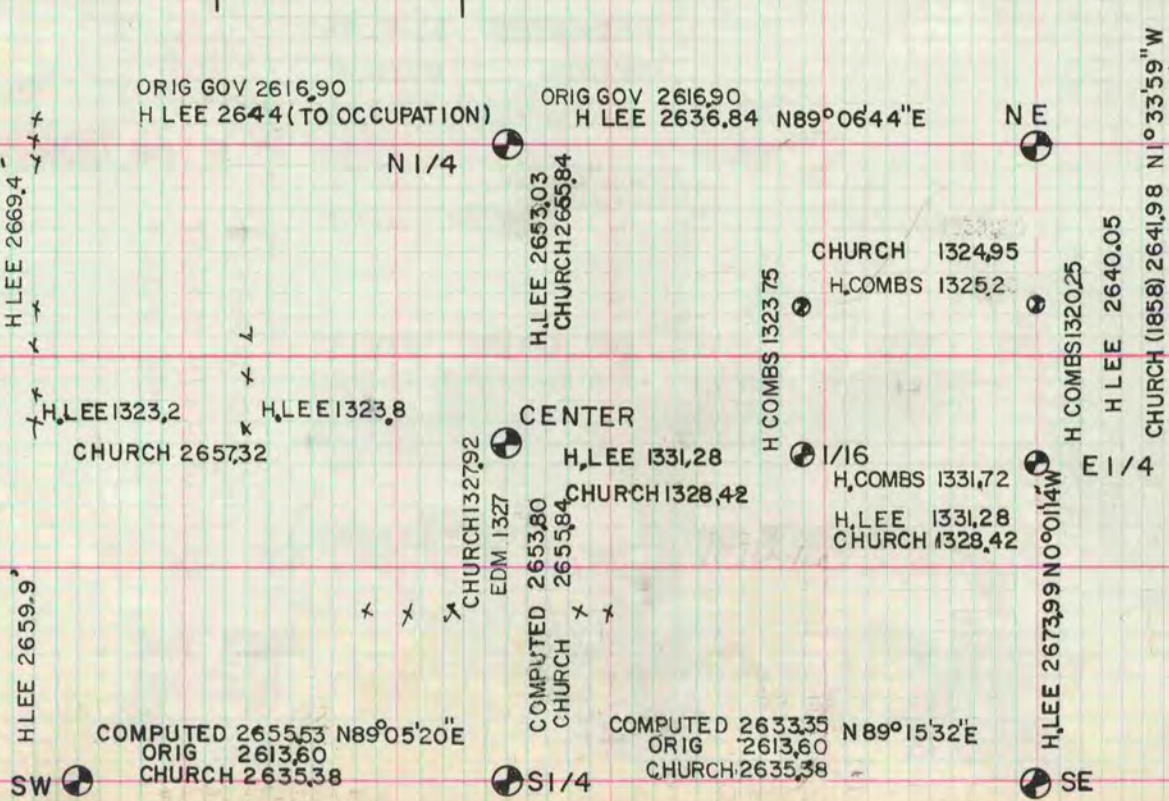
Established the corner by prorating Church's distances in the section with the computed distances. This was in harmony with occupation to the north and the road. A.F. Fisher's field notes of Dec 29, 1894 which are in the Janesville city hall stated he set a HH at the SW corner but did not think it was on the corner.



MICROFILMED

GRID NORTH  
COMBINED GRID FACTOR  
.9999350

CHURCH	COMPUTED
OCCUPATION W 1/4 COR TO E 1/4 COR	5309.56
CENTER TO N 1/4 COR	2653.703
E 1/4 COR TO NE COR	2640.05
CENTER NE 1/4 TO E 1/16th OF NE 1/4	1325.11
	(REDUCED TO GRID DIST)
	11927.75
	11936.93
	X=2653.80 CENTER TO SI/4 COR
	2655.84
	11936.93



NOTE: ALL DISTANCE EXCEPT H. COMBS & CHURCH ARE GRID DISTANCES.