

574
V-4

PLAT AND RECORD

COUNTY BUILDING
CITY OF JANESVILLE

COUNTY BUILDING
CITY OF JANESVILLE

Of a Survey on Section 8 T. 1 R. 12 E. of the 4 P. M. in Beloit Township

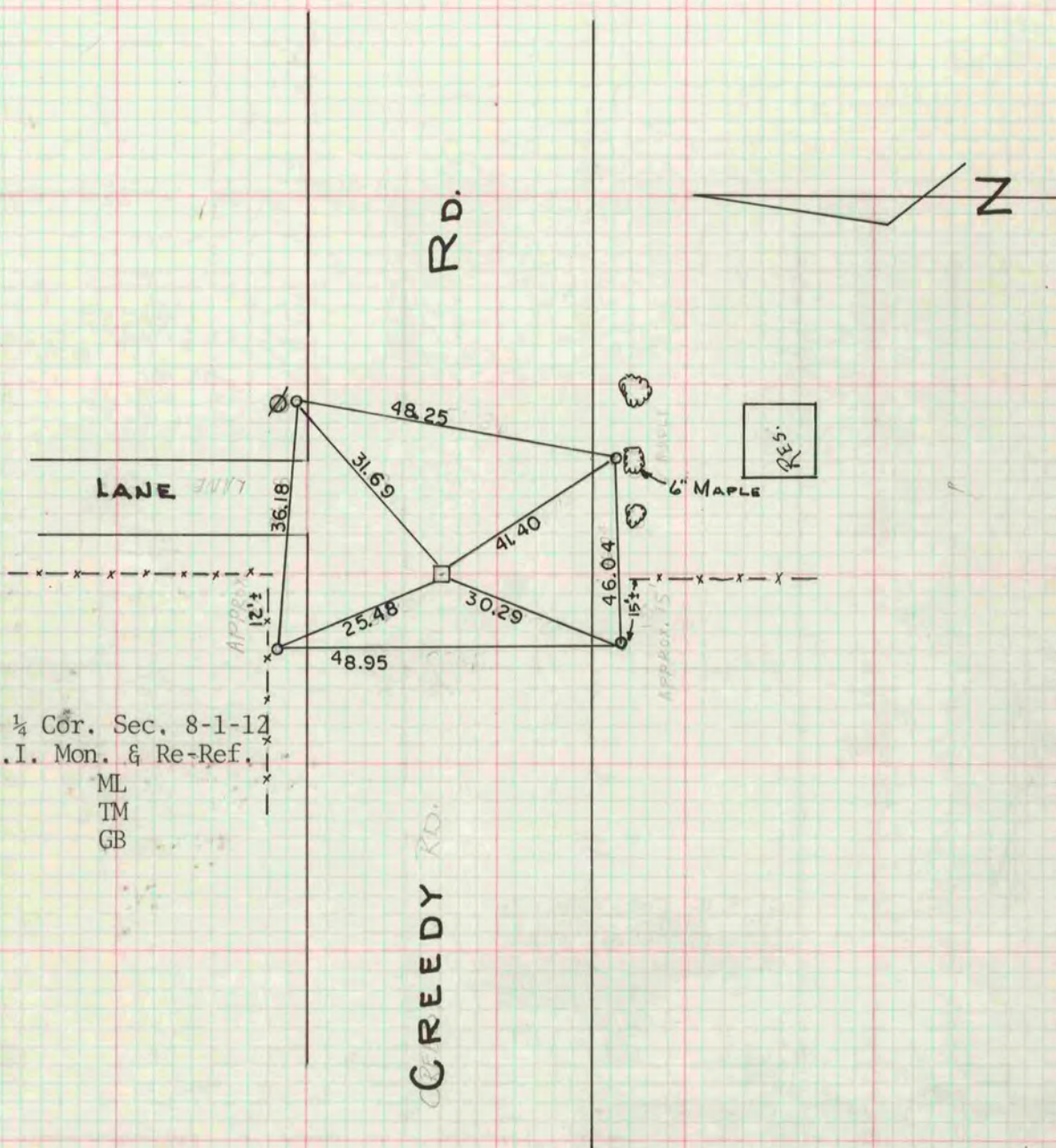
Rock County, Wisconsin, made August the 8th 19 72

I hereby certify that the following is a correct record of said survey as made by me.

MICROFILMED

Hugh J. Bee

County Surveyor.



At E 1/4 Cor. Sec. 8-1-12
Set C.I. Mon. & Re-Ref.

ML
TM
GB

THE GEO. D. BARNARD COMPANY, ST. LOUIS