

PLAT AND RECORD

COUNTY BUILDING
CITY OF JANESVILLE

Of a Survey on Section 16 T 4 N R 14 E of the 4 P. M. in LIMA Township

Rock County, Wisconsin, made JULY 29 1976

I hereby certify that the following is a correct record of said survey as made by me.

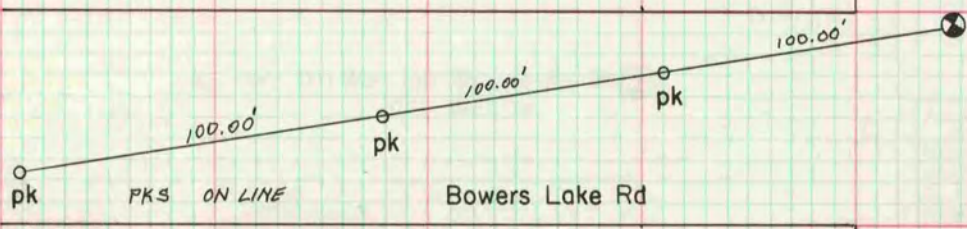
MICROFILMED



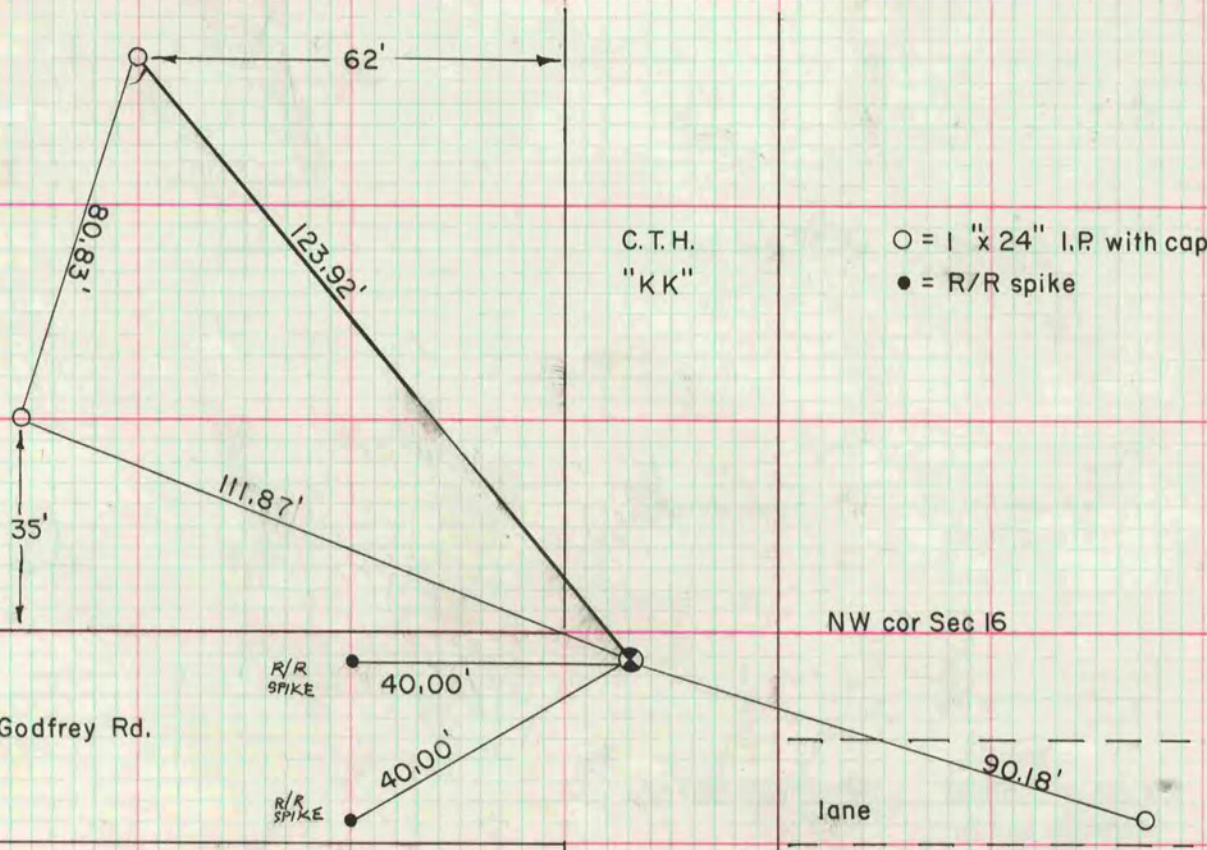
County Surveyor.

W 1/4 cor Sec 16

SEE VOL 5 PG 83



C.T.H.
"KK"



C.T.H.
"KK"

O = 1" x 24" I.P. with cap
● = R/R spike