

PLAT AND RECORD

COUNTY BUILDING
CITY OF JANESVILLE

177
V-5

Of a Survey on Section 30 T 4 R 11 E. of the 4 P. M. in PORTER Township

Rock County, Wisconsin, made JULY the 2 1976

I hereby certify that the following is a correct record of said survey as made by me.

COUNTY BUILDING
CITY OF JANESVILLE



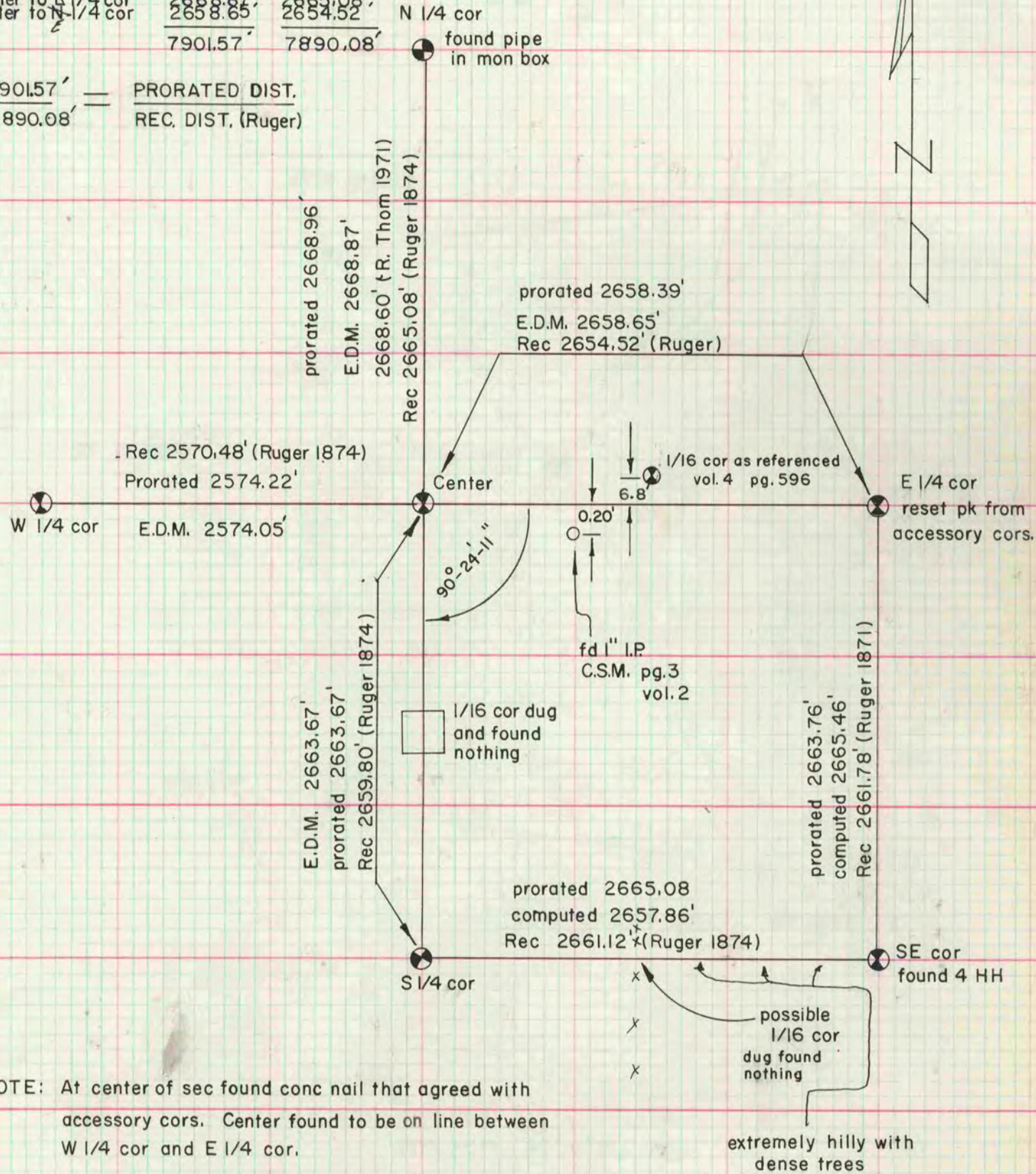
County Surveyor.

MICROFILMED

3/15/89 DAB
W 1/4 cor to center
center to E 1/4 cor
center to N 1/4 cor

EDM	REC. DIST.
2574.05'	2570.48'
2668.87'	2665.08'
2658.65'	2654.52'
<u>7901.57'</u>	<u>7890.08'</u>

$$\frac{7901.57'}{7890.08'} = \frac{\text{PRORATED DIST.}}{\text{REC. DIST. (Ruger)}}$$



NOTE: At center of sec found conc nail that agreed with accessory cors. Center found to be on line between W 1/4 cor and E 1/4 cor.

NOTE: Computed distances were computed from an open traverse. The distances were used to verify the relative position of the SE cor to the S 1/4 cor and the E 1/4 cor.

NOTE: Set S 1/4 cor on the N 1/4 cor and the center line at the prorated distance from the center.