

440 VOL. 6 PLAT AND RECORD

VOL. 6

Of a Survey on Section **1** T **3** N. R. **10** E. of the 4 P. M. in **CENTER UNION MAGNOLIA** Township

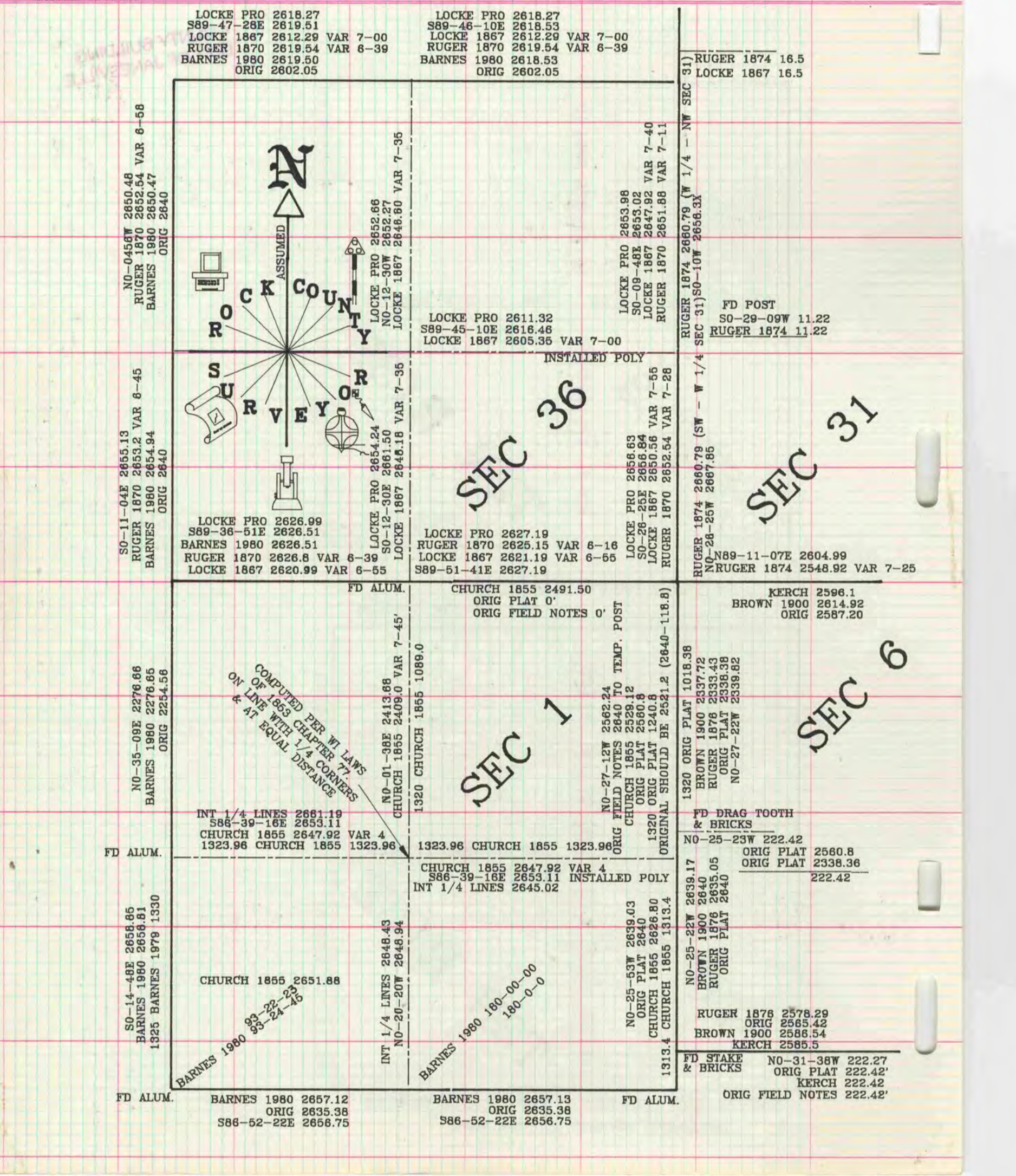
Rock County, Wisconsin, made **SEPTEMBER** the **19** th 19**94**

I hereby certify that the following is a correct record of said survey as made by me.

COUNTY BUILDING
CITY OF JANESVILLE

Donald Barnes

County Surveyor.



LOCKE PRO 2618.27
S89-47-28E 2619.51
LOCKE 1867 2612.29 VAR 7-00
RUGER 1870 2619.54 VAR 6-39
BARNES 1980 2619.50
ORIG 2602.05

LOCKE PRO 2618.27
S89-46-10E 2618.53
LOCKE 1867 2612.29 VAR 7-00
RUGER 1870 2619.54 VAR 6-39
BARNES 1980 2618.53
ORIG 2602.05

RUGER 1874 16.5
LOCKE 1867 16.5

NO-0458W 2650.48
RUGER 1870 2652.54 VAR 6-58
BARNES 1980 2650.47
ORIG 2640

NO-11-04E 2655.13
RUGER 1870 2653.2 VAR 8-45
BARNES 1980 2654.94
ORIG 2640

LOCKE PRO 2626.99
S89-36-51E 2626.51
BARNES 1980 2626.51
RUGER 1870 2626.8 VAR 6-39
LOCKE 1867 2620.99 VAR 6-55

LOCKE PRO 2654.24
NO-12-30W 2652.27
LOCKE 1867 2646.60 VAR 7-35

LOCKE PRO 2652.66
NO-12-30W 2652.27
LOCKE 1867 2646.60 VAR 7-35

LOCKE PRO 2611.32
S89-45-10E 2616.48
LOCKE 1867 2605.36 VAR 7-00

LOCKE PRO 2653.98
SO-09-48E 2653.02
LOCKE 1867 2647.92 VAR 7-40
RUGER 1870 2651.88 VAR 7-11

RUGER 1874 2660.79 (W 1/4 - NW SEC 31)
SEC 31) SO-10W 2656.3X

FD POST
SO-29-09W 11.22
RUGER 1874 11.22

LOCKE PRO 2627.19
RUGER 1870 2625.15 VAR 6-16
LOCKE 1867 2621.19 VAR 6-55
S89-51-41E 2627.19

LOCKE PRO 2656.83
SO-26-25E 2656.84
LOCKE 1867 2650.56 VAR 7-55
RUGER 1870 2652.54 VAR 7-28

RUGER 1874 2660.79 (SW - W 1/4
NO-28-25W 2667.86

NO-N89-11-07E 2604.99
RUGER 1874 2548.92 VAR 7-25

CHURCH 1855 2491.50
ORIG PLAT 0'
ORIG FIELD NOTES 0'

FD ALUM.
NO-35-09E 2276.66
BARNES 1980 2276.65
ORIG 2254.56

NO-01-38E 2413.88
CHURCH 1855 2409.0 VAR 7-45'
1320 CHURCH 1855 1089.0

COMPUTED PER WI LAWS
OF 1853 CHAPTER 77
ON LINE WITH 1/4 CORNERS
& AT EQUAL DISTANCE

NO-27-12W 2562.24
ORIG FIELD NOTES 2640 TO TEMP. POST
CHURCH 1855 2529.12
ORIG PLAT 2660.8
1320 ORIG PLAT 1240.8
ORIGINAL SHOULD BE 2521.2 (2640-118.8)

1320 ORIG PLAT 1018.38
BROWN 1900 2337.72
RUGER 1876 2333.43
ORIG PLAT 2338.38
NO-27-22W 2339.82

FD DRAG TOOTH
& BRICKS
NO-25-23W 222.42
ORIG PLAT 2560.8
ORIG PLAT 2338.36
222.42

FD ALUM.
NO-25-22W 2639.17
BROWN 1900 2640
RUGER 1876 2635.05
ORIG PLAT 2640

RUGER 1876 2578.29
ORIG 2565.42
BROWN 1900 2586.54
KERCH 2585.5

FD STAKE
& BRICKS NO-31-38W 222.27
ORIG PLAT 222.42'
KERCH 222.42'
ORIG FIELD NOTES 222.42'

CHURCH 1855 2647.92 VAR 4
S86-39-16E 2653.11
INT 1/4 LINES 2645.02

NO-25-53W 2639.03
ORIG PLAT 2640
CHURCH 1855 2626.80
1313.4 CHURCH 1855 1313.4

NO-14-48E 2658.85
BARNES 1980 2658.81
1325 BARNES 1979 1330

CHURCH 1855 2651.88
BARNES 1980 93-22-23
93-24-45

INT 1/4 LINES 2648.43
NO-20-20W 2648.94

BARNES 1980 180-00-00
180-0-0

FD ALUM. BARNES 1980 2657.13
ORIG 2635.38
S86-52-22E 2656.75

BARNES 1980 2657.13
ORIG 2635.38
S86-52-22E 2656.75

FD ALUM.