

PLAT AND RECORD

91

VOL. 6

Of a Survey on Section 3 T 1 R 10 E. of the 4 P AVON Township
Rock County, Wisconsin, made NOV 25th 1980

I hereby certify that the following is a correct record of said survey as made by me.

COUNTY BUILDING
CITY OF JANESVILLE

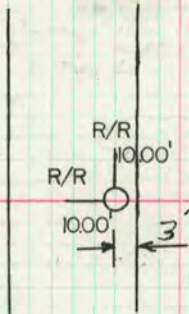
Donald A. Barnes



County Surveyor.

SE COR SEC 3

DUG & FOUND 3' DEEP 1" X 36" IRON PIN SURROUNDED BY 4 FLAT LIMESTONES, REPLACED PIN WITH 3/8" X 32" BOLT & PLACED PIN HORIZONTALLY ON SIDE OF BOLT. BOLT IS 3' DEEP



MICROFILMED

THE FOLLOWING ARE CORRECTIONS FOR PAGE 148 VOL 5 :

- N1/16 COR NE 1/4 SEC 3 SHOULD BE N1/16 COR NW 1/4 SEC 3
- N1/16 COR NW 1/4 SEC 3 SHOULD BE N1/16 COR NE 1/4 SEC 3