

PLAT AND RECORD

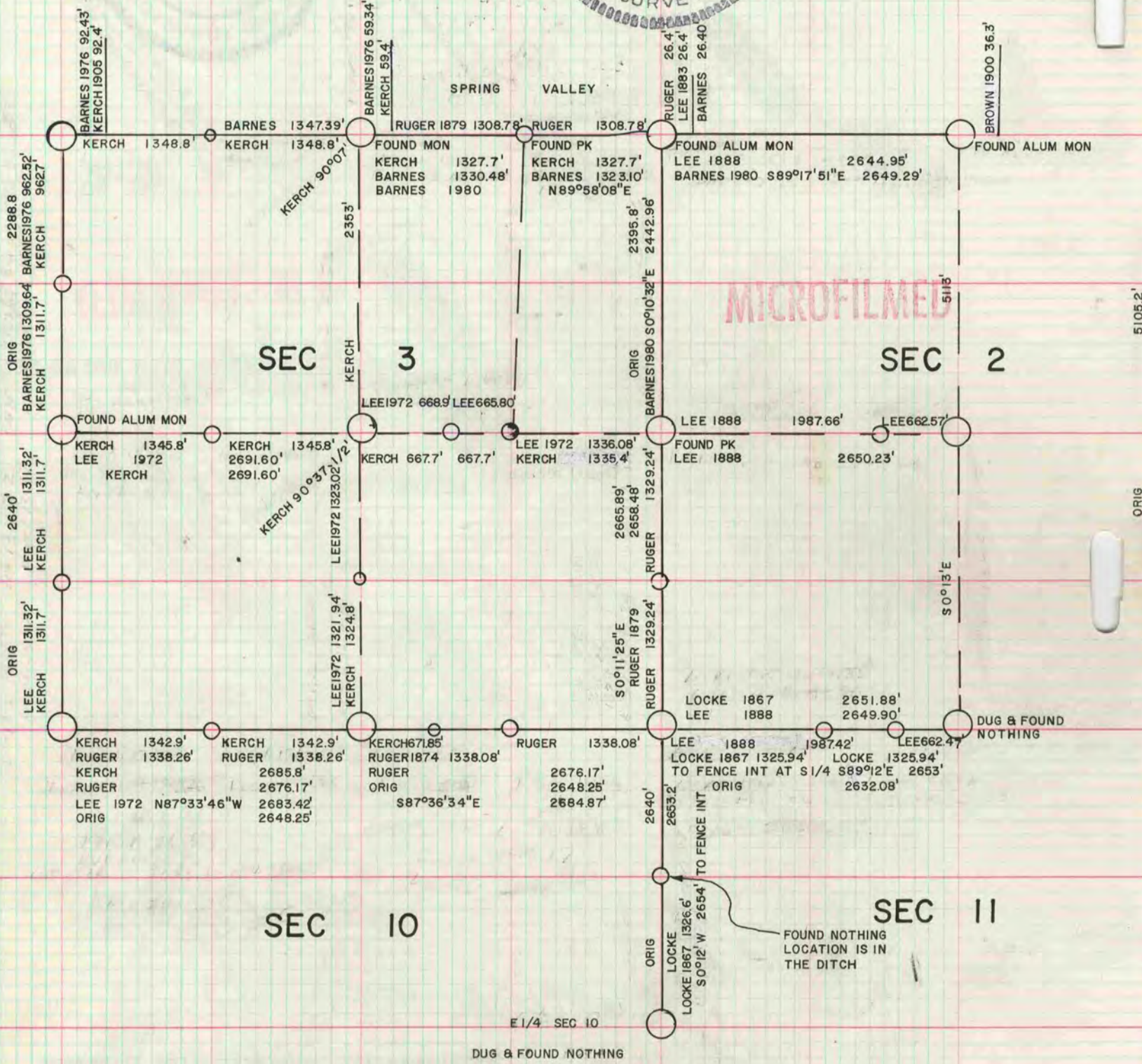
Of a Survey on Section **2,3,10,11** T **1** R **10** E. of the 4 P. M. in **AVON** Township
Rock County, Wisconsin; made **NOV** the **24** day of **NOVEMBER** 19**80**

I hereby certify that the following is a correct record of said surveys made by me.

COUNTY BUILDING
CITY OF JANESVILLE



County Surveyor.



I TRAVERSED FROM THE NE CORNER TO THE W 1/4 CORNER OF SECTION 3. USING A COORDINATE TRANSFORMATION PROGRAM, THE TRAVERSE BEARINGS AND COORDINATES WERE BASED ON THE SAME SYSTEM AS H. LEE'S 1978 SURVEY FOR TED LYONS, ORDER NO. 14986 AND THE SURVEY RECORDED IN VOL 4 PAGE 531. THE S 1/4 CORNER OF SECTION 3 WAS NOT TIED TO BECAUSE IT IS BURIED BY A LARGE PILE OF TREES AND EARTH. I SET A R/W POST IN THE GENERAL AREA OF THE S 1/4 CORNER OF SECTION 3.