

PLAT AND RECORD

VOL. 6

Of a Survey on Section 14 T 3 R 13 E. of the 4 P. M. in **JOHNSTOWN** Township

Rock County, Wisconsin, made **AUGUST** the **25** day of **1931**

I hereby certify that the following is a correct record of said survey as made by me.

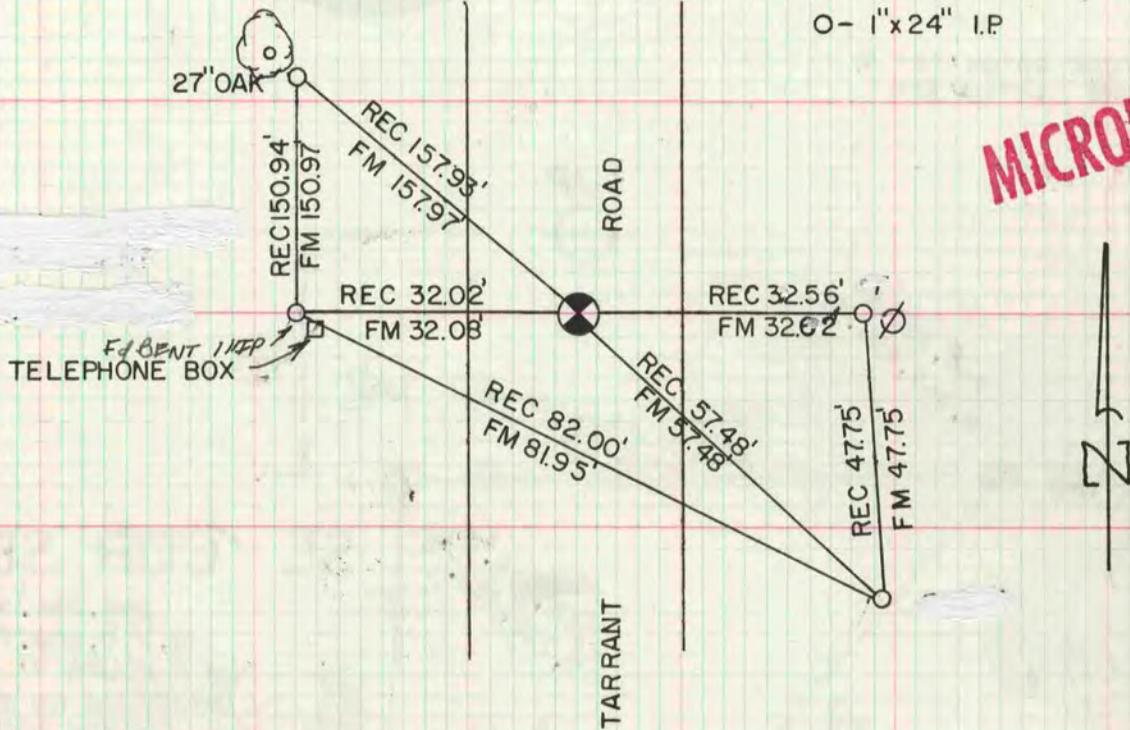
COUNTY BUILDING CITY OF JANESVILLE

JOHNSTOWN HARMONY
 DONALD A. BARNES
 S-1216
 JANESVILLE WI.
 County Surveyor.

W 1/4 COR SEC 18 T3N R14E *Johnstown*

REPLACED PK NAIL WITH ALUM MON

O-1"x24" I.P.



N 1/4 COR SEC 14 T3N R13E *HARMONY*

FD 1" I.P. OVER CUT L.S. MON; DRILLED HOLE IN CENTER; SET SPIKE ALUM MON

O-1" I.P.

