

PLAT AND RECORD

Of a Survey on Section 7, 19 T 1 R 15 E. of the 4 P. M. in SHARON Township

Rock County, Wisconsin, made DEC. the

I hereby certify that the following is a correct record of said survey as made by

**COUNTY BUILDING
CITY OF JANESVILLE**

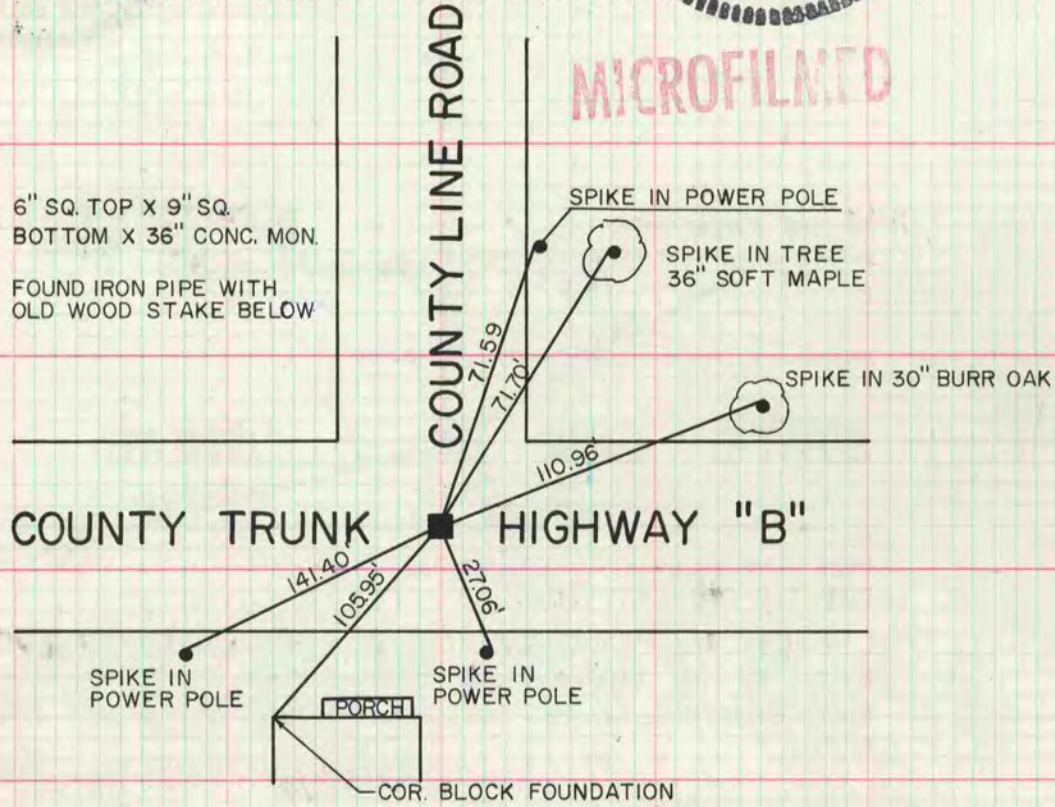
SHARON Township

17th Wisconsin



NW COR SEC 19

DATA SUPPLIED BY WALWORTH COUNTY SURVEYORS OFFICE



MICROFILMED

6" SQ. TOP X 9" SQ.
BOTTOM X 36" CONC. MON.

FOUND IRON PIPE WITH
OLD WOOD STAKE BELOW

SPIKE IN POWER POLE

SPIKE IN TREE
36" SOFT MAPLE

SPIKE IN 30" BURR OAK

COUNTY TRUNK HIGHWAY "B"

SPIKE IN
POWER POLE

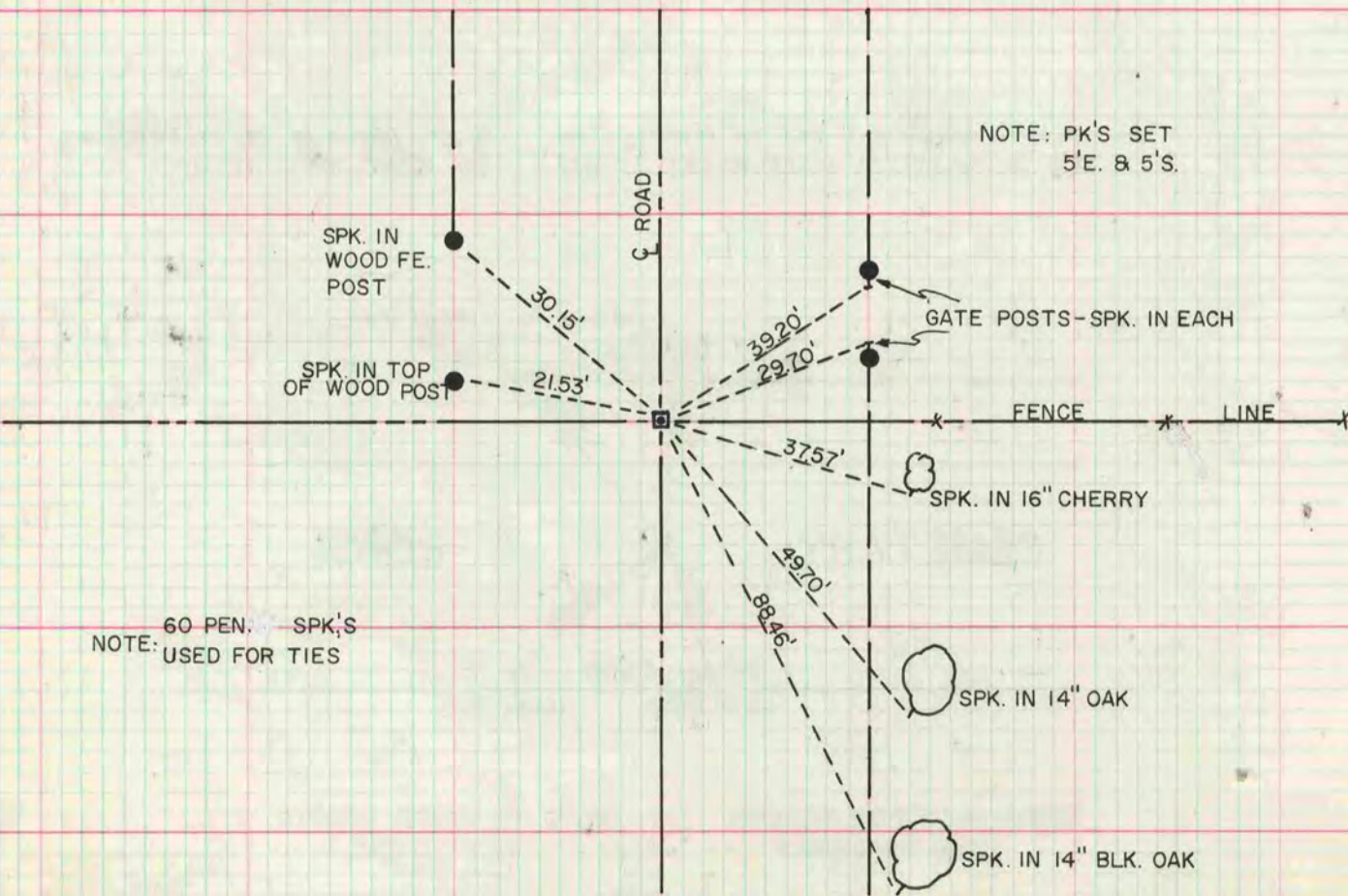
SPIKE IN
POWER POLE

COR. BLOCK FOUNDATION

NOTE: 60 PENNY SPIKES WERE USED
LOCATED BY: H. KOLB MAY 74
LLOYD L. JENSEN 1973

W1/4 COR SEC 7

DATA SUPPLIED BY WALWORTH COUNTY SURVEYORS OFFICE



NOTE: PK'S SET
5'E. & 5'S.

SPK. IN
WOOD FE.
POST

SPK. IN TOP
OF WOOD POST

GATE POSTS - SPK. IN EACH

FENCE LINE

SPK. IN 16" CHERRY

SPK. IN 14" OAK

SPK. IN 14" BLK. OAK

NOTE: 60 PEN. SPK'S
USED FOR TIES

FOUND CONC. MONU. SET BY L. JENSEN IN 1953. REPLACED IT WITH A CONC.
COUNTY MARKER.

REVISED

LOCATED BY T. JENSEN, S-1084, AUG. 25, 1975