

PLAT AND RECORD

79

VOL. 6

Of a Survey on Section 14, 22, 30 T. 1 R. 14 E. of the 4 P. M. in CLINTON Township
Rock County, Wisconsin, made OCT the 20 1980

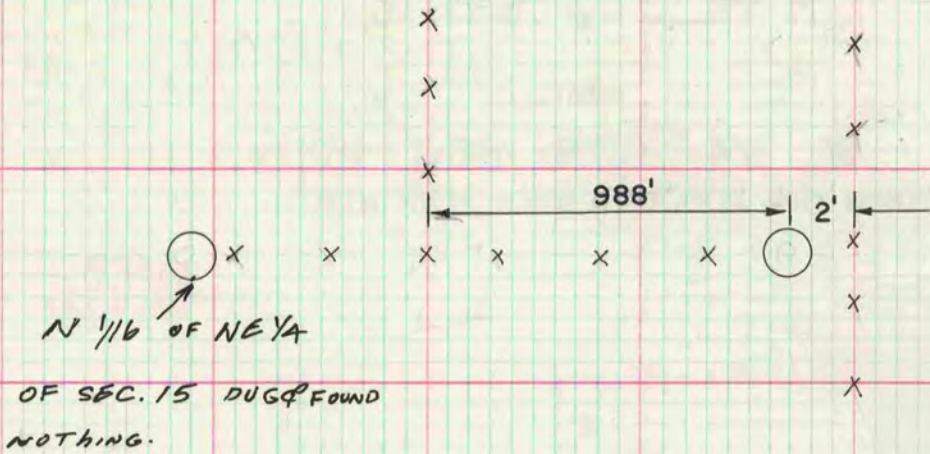
I hereby certify that the following is a correct record of said survey as made by me.

COUNTY BUILDING
CITY OF JANESVILLE



W 1/4 COR SEC 14

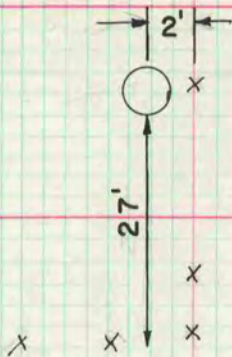
DUG & FOUND NOTHING, FENCE POST AT FENCE INTERSECTION
WAS SET IN 4' DIA CONCRETE, WHICH PROBABLY DESTROYED THE
CORNER. SET ALUM MON ON LINE WITH THE SW & NW CORNER
OF SECTION 14 AT SINGLE PROPORTIONATE DISTANCE



MICROFILMED

E 1/4 COR SEC 22

DUG & FOUND NOTHING, SET ALUM MON ON LINE WITH NE &
SE CORNER OF SECTION 22 AT SINGLE PROPORTIONATE DISTANCE



E 1/4 COR SEC 30

FOUND 1" IRON PIPE 24" DEEP, IN CENTERLINE OF ROAD.
DROVE PIPE DEEP & SET ALUM MON ON TOP