

PLAT AND RECORD

COUNTY BUILDING
CITY OF JANESVILLE

577
VOL. 5

Of a Survey on Section **3,4** T **4** R **13** E. of the 4 P. M. in **MILTON** Township

Rock County, Wisconsin, made **OCTOBER** the **9** 19 **79**

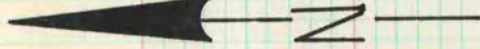
I hereby certify that the following is a correct record of said survey as made by me

Ronald Barnes

County Surveyor.

THE GEO. D. BARBER COMPANY, ST. LOUIS

MICROFILMED

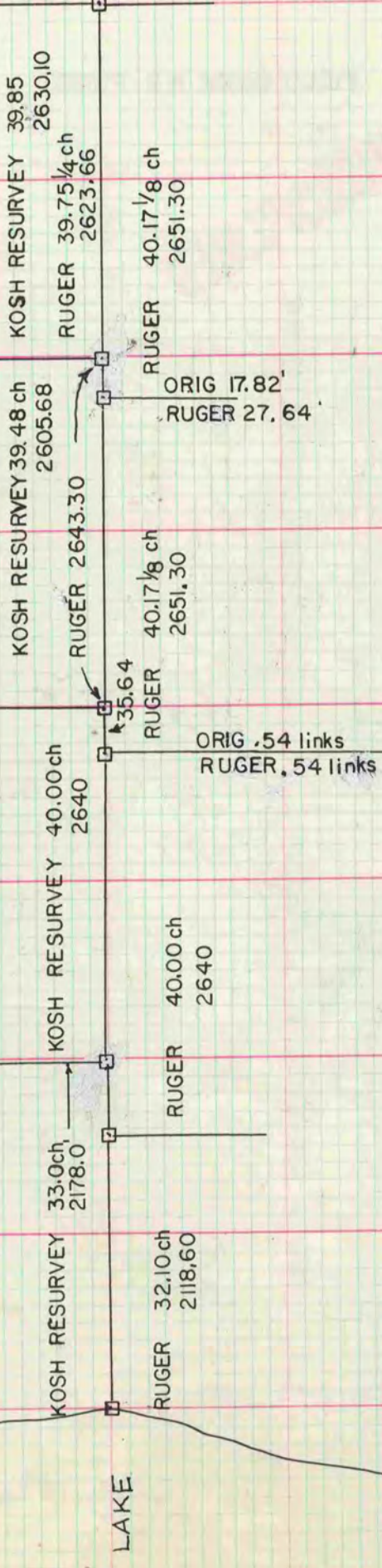


SEC 34-5-13

SEC 3-4-13

SEC 33-5-13

SEC 4-4-13



INFORMATION SUPPLIED BY TOM WOLLIN,
JEFFERSON COUNTY SURVEYOR.

I DON BARNES *Ronald Barnes*
 DUG & FOUND 5X6 X20 CUT LIMESTONE
 REPLACED WITH ALUM MON (JEFFERSON
 CAP). AN ELECTRIC COMPANY CREW
 DETERMINED THE APPROXIMATE
 DISTANCE TO THE S 1/4 COR OF SEC 34
 IS 2643 ±

SW COR
SEC 34
T5N R13E