

PLAT AND RECORD

COUNTY BUILDING
CITY OF JANESVILLE

Of a Survey on Section 5-6 T 4 R 14 E. of the 4 P. M. in LIMA Township

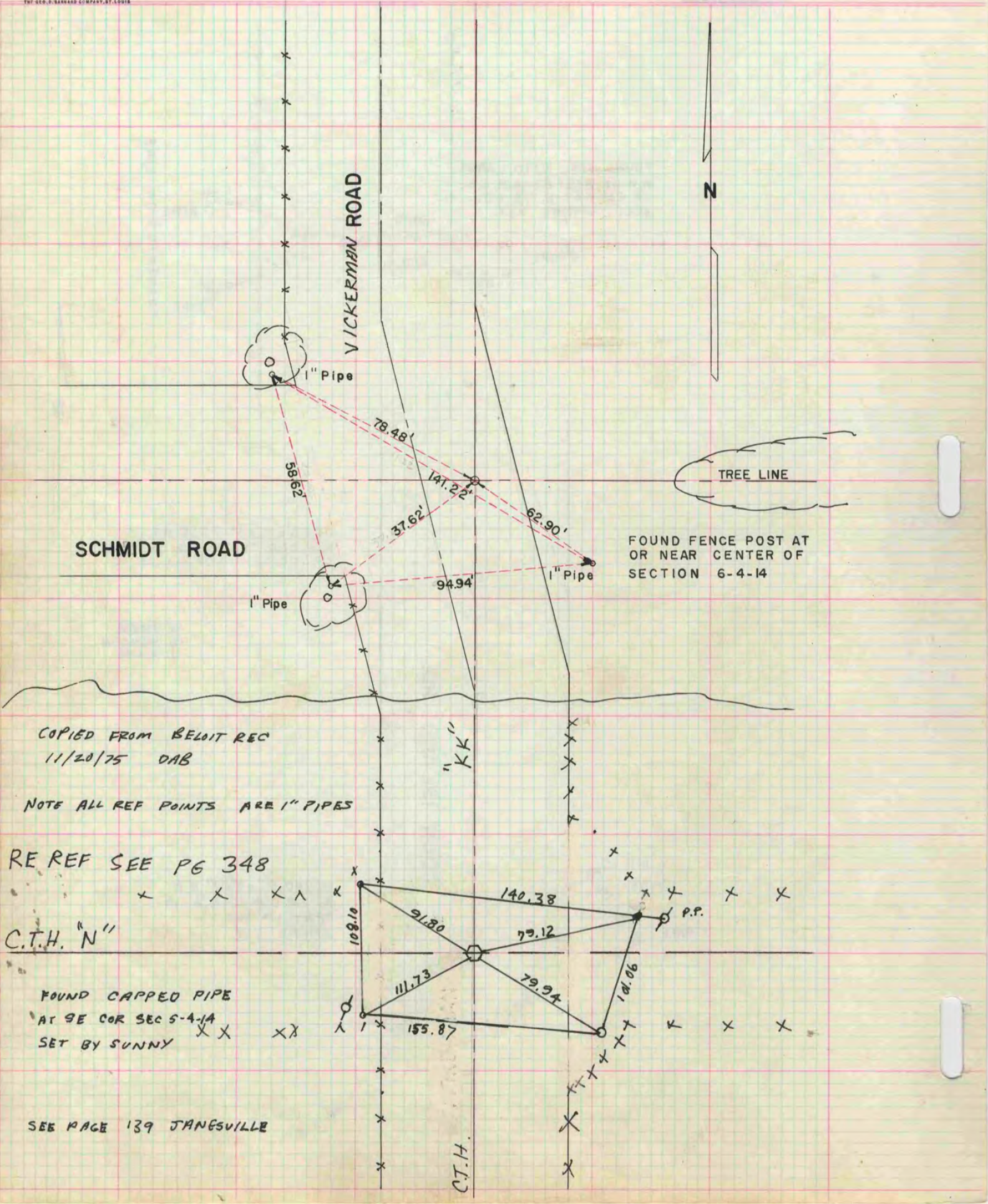
Rock County, Wisconsin, made SEPTEMBER the 14 1960

I hereby certify that the following is a correct record of said survey as made by me.

MICROFILMED

R. W. Batt

County Surveyor.



COPIED FROM BELoit REC
11/20/75 DAB

NOTE ALL REF POINTS ARE 1" PIPES

RE REF SEE PG 348

C.T.H. "N"

FOUND CAPPED PIPE
AT SE COR SEC 5-4-1A
SET BY SUNNY

SEE PAGE 139 JANESVILLE

C.T.H.