

V-1 MICROFILMED

# PLAT AND RECORD

Of a Survey on Section 29 T 3 R 10 E. of the 4 P. M. in Magnolia Township

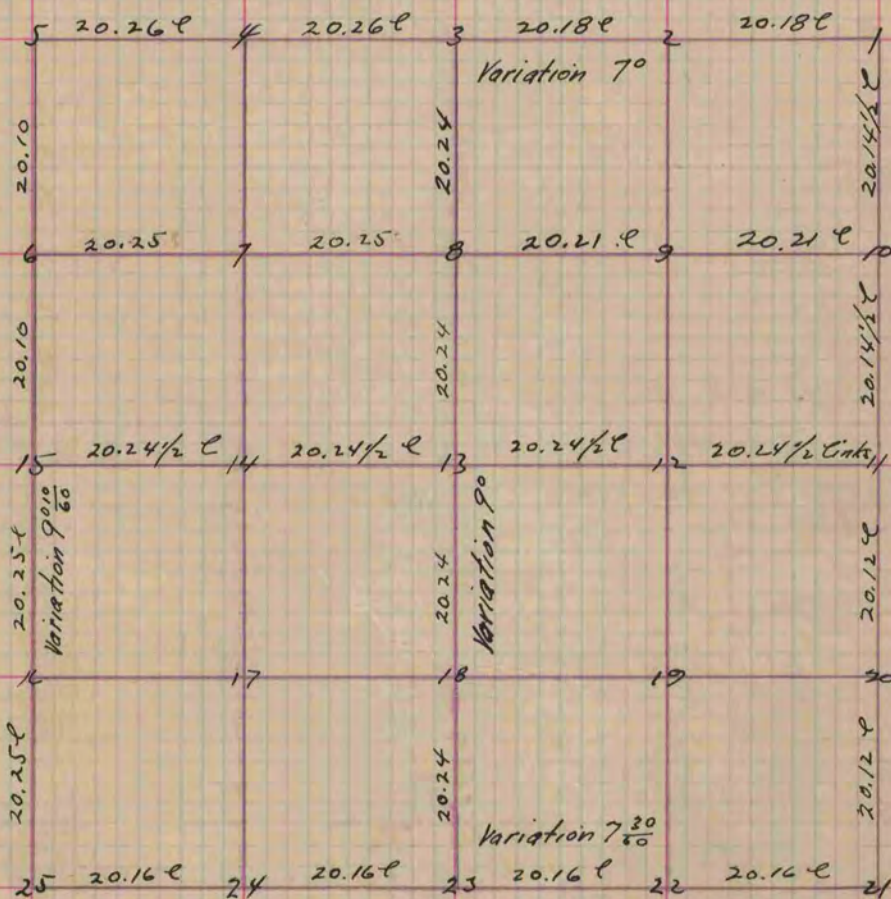
Rock County, Wisconsin, made March the 22<sup>nd</sup> & 23<sup>rd</sup> 1858

I hereby certify that the following is a correct record of said survey as made by me.

COUNTY BUILDING  
CITY OF JANESVILLE

(Signed) Joseph Church  
R.H.B.

County Surveyor.



- Fig. 13. W.O. 36 N. 13 W. 139 Variation 9°
- " 7 Br.O. 12 N. 68 1/2 E. 135 links
- " " 4 S 4 W 13<sup>l</sup>
- " 6 " 2 S 32 1/2 E. 68
- " " 14 N 70 E 170 Variation 9
- " 4 W.O. 36 N 52 1/2 E. 92
- " 20 Br.O. 14 N 22 1/2 W. 32<sup>l</sup> Variation 9
- " 25 Field notes incorrect
- " " Br.O. 16 N 7 1/2 W. 166 1/2 links
- " 2 " " 20 S 39 W. 155
- " 12 " " 20 N 54 1/2 E. 47
- " " 20 S. 47 W. no distance neglected to put it down
- " 22 " " 16 N 33 1/2 W 93
- " 23 Field notes to short by 32 links

Copied from Page 79 Vol. 1. Original County Surveyors Record