

MICROFILMED

PLAT AND RECORD

Of a Survey on Section 16 T 3 R 13 E. of the 4 P. M. in Harmony Township

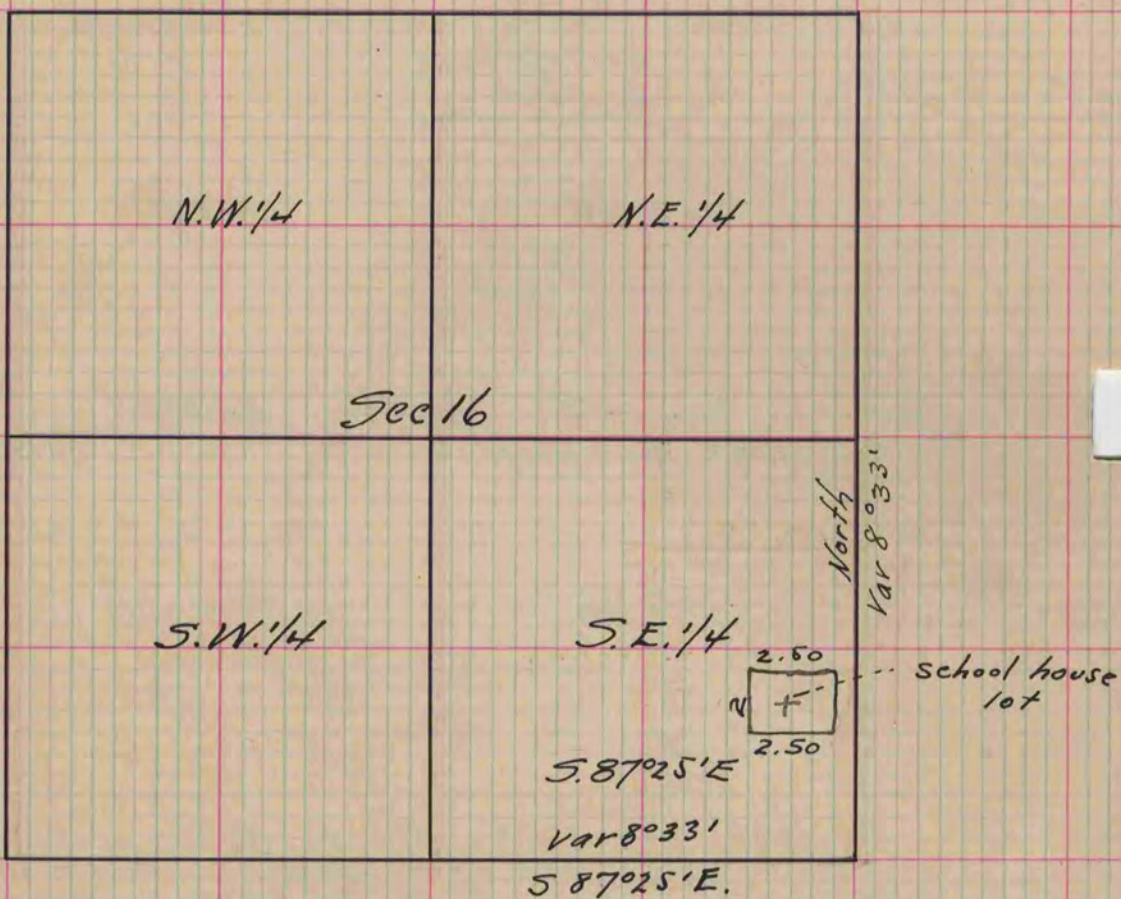
Rock County, Wisconsin, made January the 28th 1859

I hereby certify that the following is a correct record of said survey as made by me.

COUNTY BUILDING
CITY OF JANESVILLE

(Signed) Edward Ruger
R. H. D. County Surveyor.

Made for School district. N.



+ Represents the school house lot of the district above referred to. distances given in chains.

Copied from Page 88 Vol. 1. Original County Surveyors Record