

PLAT AND RECORD

89
V-1

MICROFILMED

COUNTY BUILDING
CITY OF JANESVILLE

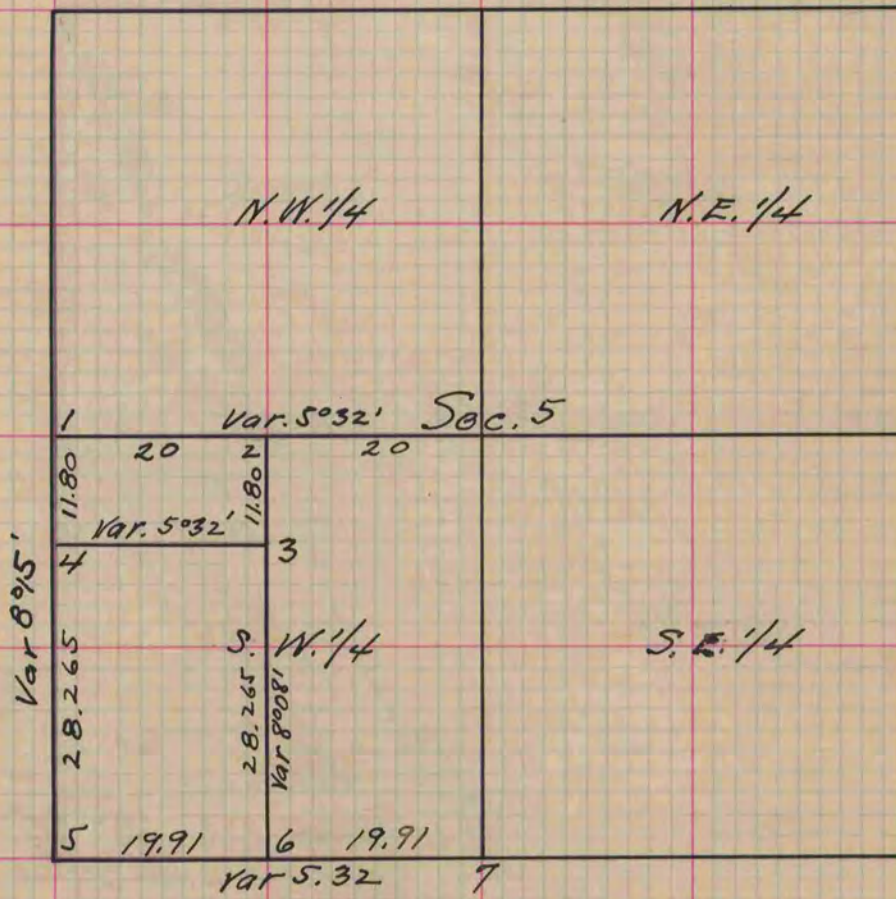
Of a Survey on Section 5 T 3 R 13 E. of the 4 P. M. in Harmony Township
Rock County, Wisconsin, made February the 3rd 1859

I hereby certify that the following is a correct record of said survey as made by me.

(Signed) Edward Ruger
R.H.B.

County Surveyor.

For J. B. Crosby & H. Dillenbeck
Distances given in chains
Variations marked on the lines



- Fig 1 too new witness trees
- " " Burr Oak 14 S. 13° 20' E 29
- " " " " 8 S 45° 45' W 63
- Fig 2 " " 13 S 15° E 75
- " " " " 16 S 14° 40' W 77
- " 3 " " Stump 14 ft. high 16 S 67° W 139
- " 3 " " 15 S 42° 30' E 212 Var 8° 08'
- " 4 White Oak 14 N 23° 35' E 43
- " " " " 14 S. 60° 15' 85 1/2
- " 5 Burr Oak 14 N 50° E 4
- " " " " 10 N 40° W 14

- Fig 6 Burr Oak 10 N 3° 25' E 32 1/2
- " " White Oak 9 N 70° 56' W 64 3/4
- " 7 Old witness trees gone
took new ones
- " " Black Oak 12 S 84° 10' W 25
- " " " " 15 S 29° 40' W 50

Copied from Page 89 Vol. One original County Surveyor's Record