

Of a Survey on Section 1 T 4 R 13 E. of the 4 P. M. in MILTON Township
 Rock County, Wisconsin, made AUGUST 1980

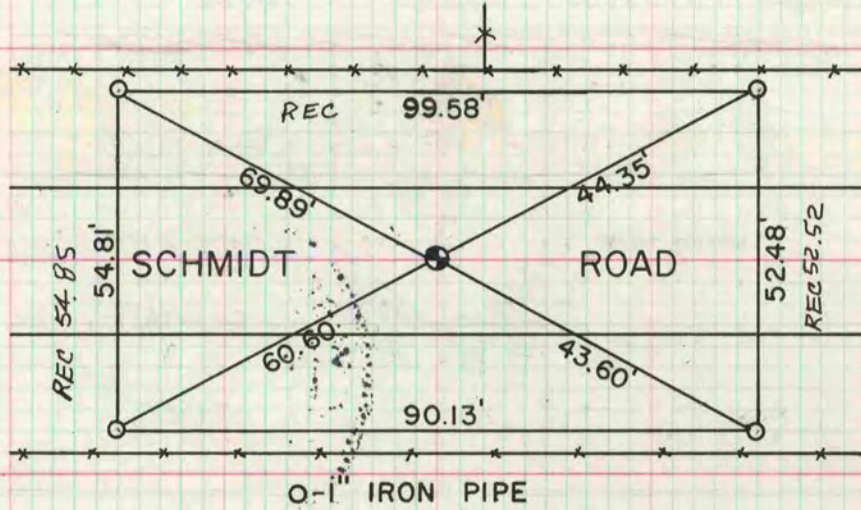
COUNTY BUILDING
 CITY OF JANESVILLE



County Surveyor.

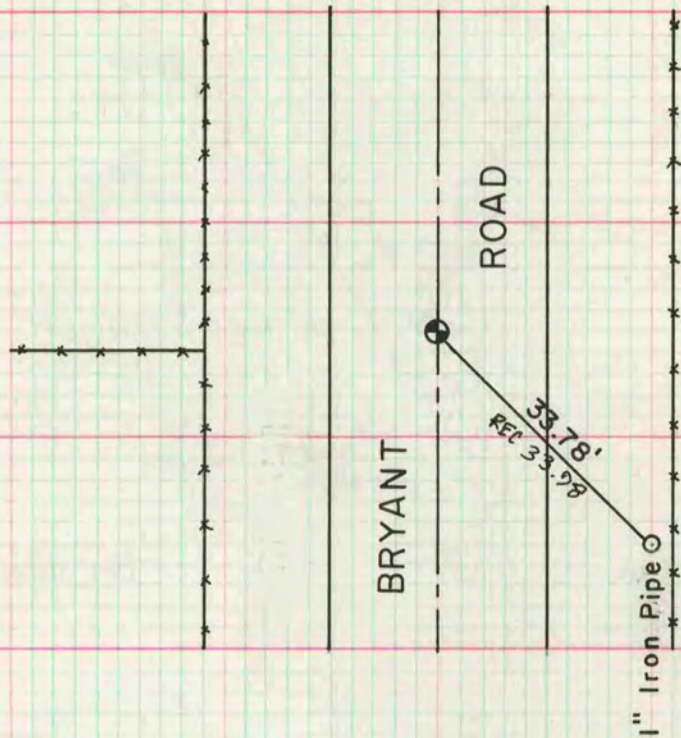
E. 1/4 COR. SEC. 1

PLACED ALUMINUM MONUMENT OVER STONE
 AND REPLACED 1" x 24" IRON PIPE AS RECORDED
 IN VOLUME 3 PAGE 51 SURVEYORS RECORDS.



S. 1/4 COR. SEC. 1

FOUND 1 1/2" DIAMETER IRON PIPE AND SET ALUMINUM
 MONUMENT ON AUGUST 11, 1980



MICROFILMED