

PLAT AND RECORD

195

VOL. 6

Of a Survey on Section **3** T **2** R **11** E. of the 4 P. M. in **ROCK PLYMOUTH** Township
 Rock County, Wisconsin, made **JULY** the **25**

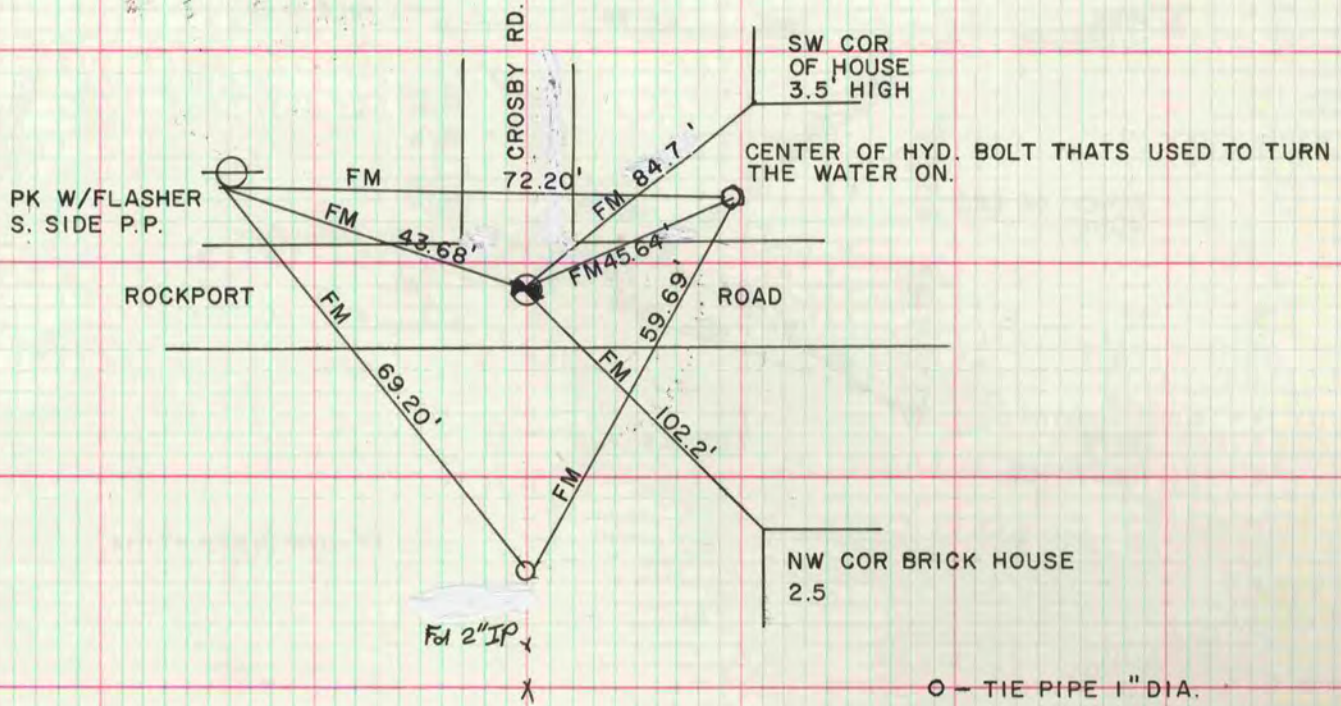
I hereby certify that the following is a correct record of said survey as made by me

**COUNTY BUILDING
 CITY OF JANESVILLE**



NE COR SEC 3 ROCK PLYMOUTH TWP

FOUND PUNCHED HOLE IN CUT "X" ON TOP OF MAN HOLE COVER. ALIGNMENT MARKS CUT IN RIM & OUTER EDGE OF MAN HOLE



MICROFILMED

N 1/4 COR SEC 25 PLYMOUTH TWP

SET ALUM. MON. FROM TIES

