

VOL. 6 PLAT AND RECORD

48

Of a Survey on Section 8, 9 T 1 R 12 E. of the 4 P. M. in Beloit Township
Rock County, Wisconsin, made July 19 80

I hereby certify that the following is a correct record of said survey as made by me.



COUNTY BUILDING
CITY OF JANESVILLE

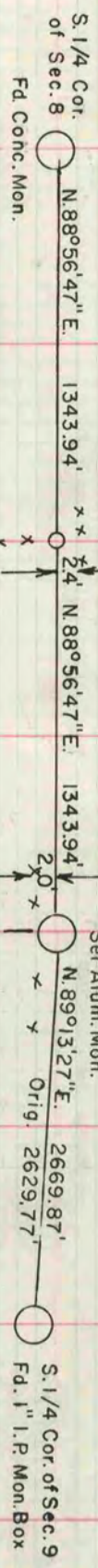
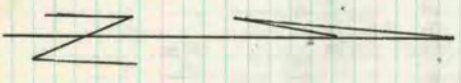
County Surveyor.

THE W.P. BARNARD COMPANY, ST. LOUIS

S. 1/4 Cor. of Sec. 8
DUG & FOUND CONCRETE MONUMENT WITH FOASS CAP. TOP PORTION BROKE OFF. SET 15" ALUM MON ON TOP OF CONCRETE MONUMENT AND SET R/R SPIKES AND IRON PIPE ON THE NORTH AND EAST SIDE 15" DEEP

S. 1/16 of SE 1/4 of Sec. 8
DUG AND FOUND STONES OF RECORD BUT DID NOT FIND STAKE. SET 7" GUTTER NAIL IN MIDDLE OF STONES.

S.E. Cor. of Sec. 8
DUG AND FOUND NOTHING. SET ALUM ON LINE WITH THE S 1/4 CORNER OF SECTION 8 AND THE S 1/16 CORNER OF THE SE 1/4 OF SECTION 8 AT SINGLE PROPORTIONATE DISTANCE.



Orig. 2644.13'
Locke 1864 2673.66'
N. 88°56'47\"/>

SEC 8

SEC 9

MICROFILMED