

PLAT AND RECORD

149

VOL. 6

Of a Survey on Section **6** T **2** R **14** E. of the 4th P.M. **BRADFORD** Township
Rock County, Wisconsin, made **MARCH** the **24** 19**81**

I hereby certify that the following is a correct record of a survey as made by me.

COUNTY BUILDING
CITY OF JANESVILLE

Donald



County Surveyor.

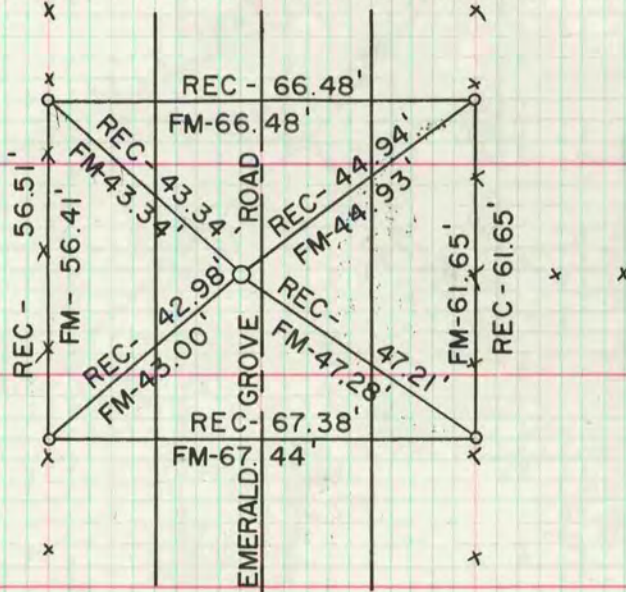
SE COR SEC

FOUND RAILROAD SPIKE & UNDER THAT 1" IRON PIPE. AGREED WITH ALL RECORD TIES. REPLACED WITH ALUM MON, 0.5' SOUTH OF SOUTH EDGE OF PAVEMENT.

MICROFILMED

E 1/4 COR SEC 6

REPLACED 1" IRON PIPE WITH ALUM MON



NW COR SEC 6

SET ALUM MON ON TOP OF CUT STONE. AGREED WITH TIES.

W 1/4 COR SEC 6

FOUND RAILROAD SPIKE & TIES SET ALUM SPIKE MON IN CUT LIMESTONE.

SW COR SEC 6

FOUND CUT STONE SET CAR POST.