

PLAT AND RECORD

Of a Survey on Section 32 T 1 R 10 E. of the 4 P. M. in AVON Township

Rock County, Wisconsin, made AUGUST the

I hereby certify that the following is a correct record of said survey as made by me

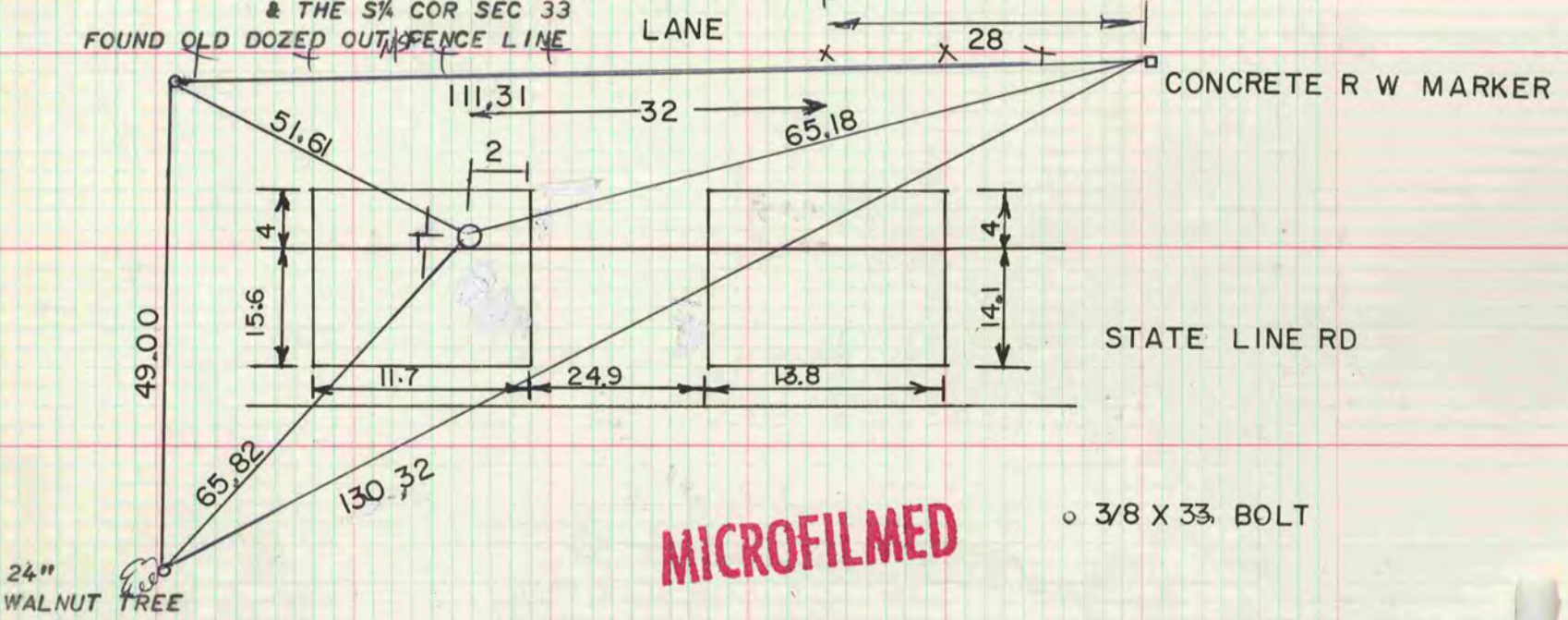
COUNTY BUILDING
CITY OF JANESVILLE

Ronald Barnes
AND SURVEYOR County Surveyor.



SE COR SEC 32

DUG 6' DEEP & FOUND NOTHING. SET CORNER ON LINE WITH THE S 1/4 COR OF SEC 32 & THE NE COR SEC 22 T29NR10E. MID WAY BETWEEN THE S 1/4 COR SEC 32 & THE S 1/4 COR SEC 33

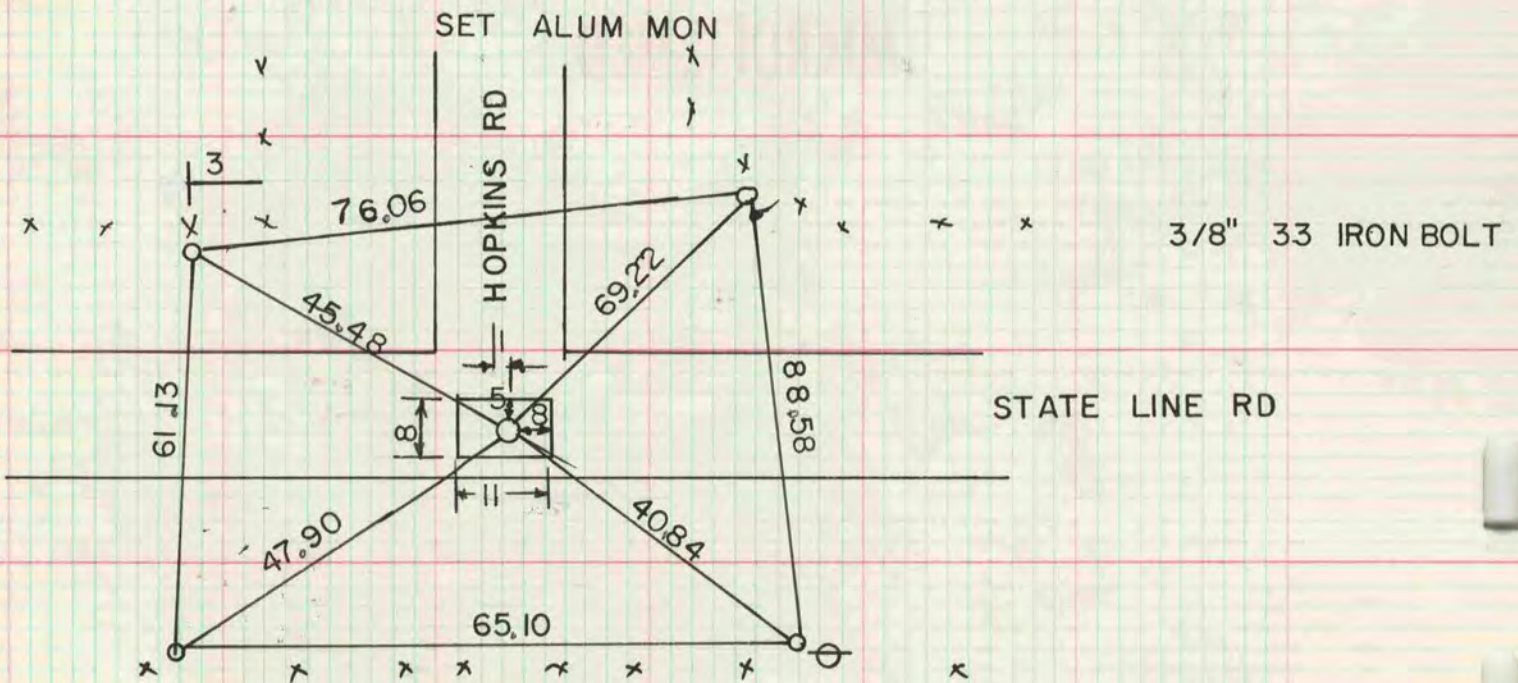


W 1/4 COR SEC 32

FOUND 2" IP 1.5 DEEP. DROVE IP DEEPER & SET ALUM MON ON TOP OF IT.

SW COR SEC 32

DUG 1.5' DEEP AND FOUND BEDROCK. SET CORNER ON LINE WITH THE S 1/4 COR SEC 31 & THE NE COR SEC 21 T29NR10E AT RECORD DISTANCE FROM THE NE COR SEC 21



S 1/16 th COR OF SW 1/4 SEC 32

DUG & FOUND BEDROCK UNDER ASPHALT. CORNER DESTROYED BY ROAD CONSTRUCTION