

MICROFILMED

PLAT AND RECORD

111

V-1

COUNTY BUILDING  
CITY OF JANESVILLE

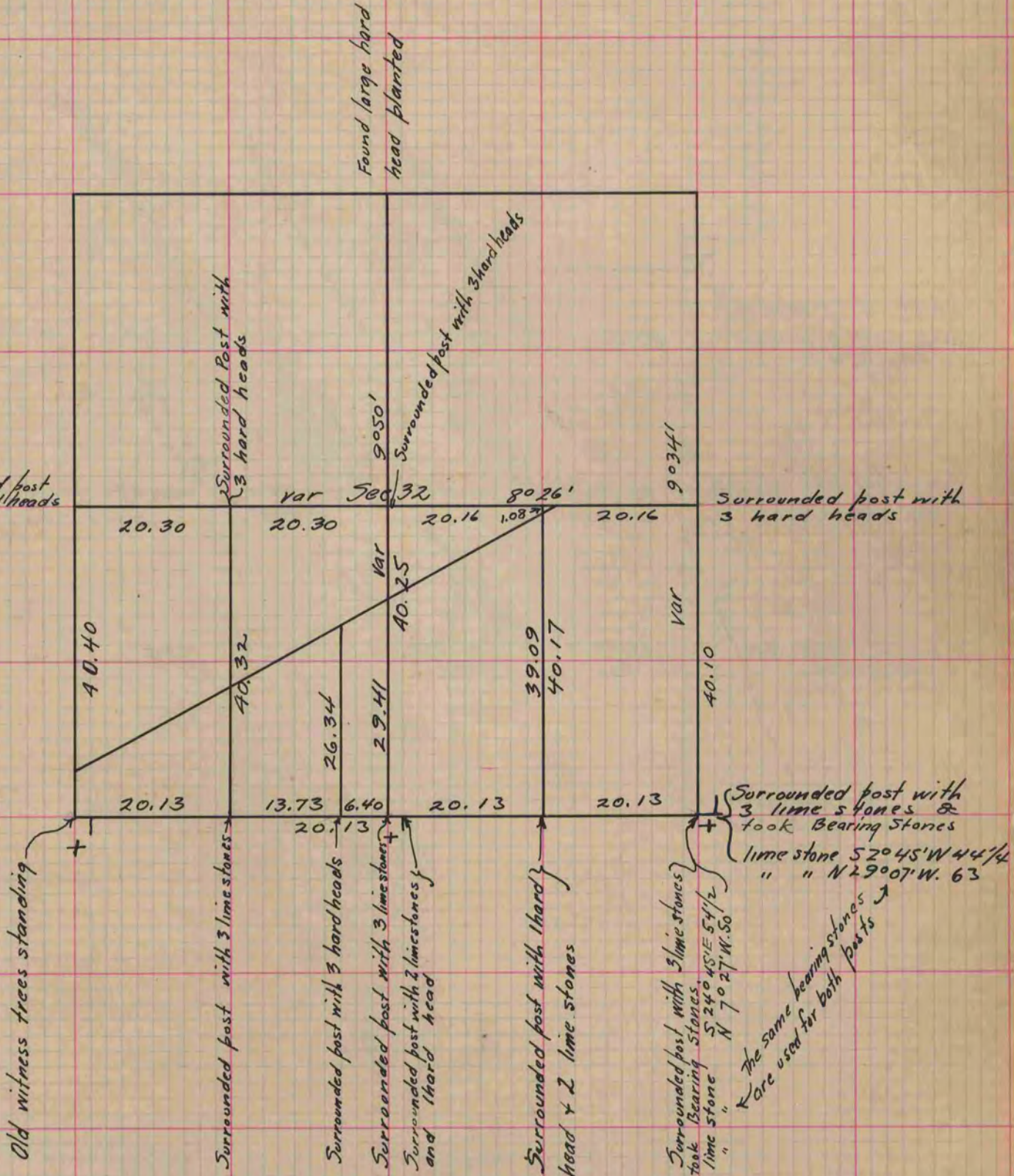
Of a Survey on Section 32 T 3 R 12 E. of the 4 P. M. in Janesville Township

Rock County, Wisconsin, made August the 30<sup>th</sup> + 31<sup>st</sup> 1859

I hereby certify that the following is a correct record of said survey as made by me.

(Signed) Edward Roger  
R.H.B.

County Surveyor.



+ The posts of the Secs in the Town of Rock are 25 links East of those for Janesville.

Copied from Page 120 Vol. 1. Original County Surveyors Record