

MICROFILME

PLAT AND RECORD

19
VI

COUNTY BUILDING
CITY OF JANESVILLE

Of a Survey on Section 5 T 1 R 13 E. of the 4 P. M. in Turtle Township
Rock County, Wisconsin, made May the 16th 1953

I hereby certify that the following is a correct record of said survey as made by me.

(Signed) Peter McVean
R.H.B. County Surveyor.

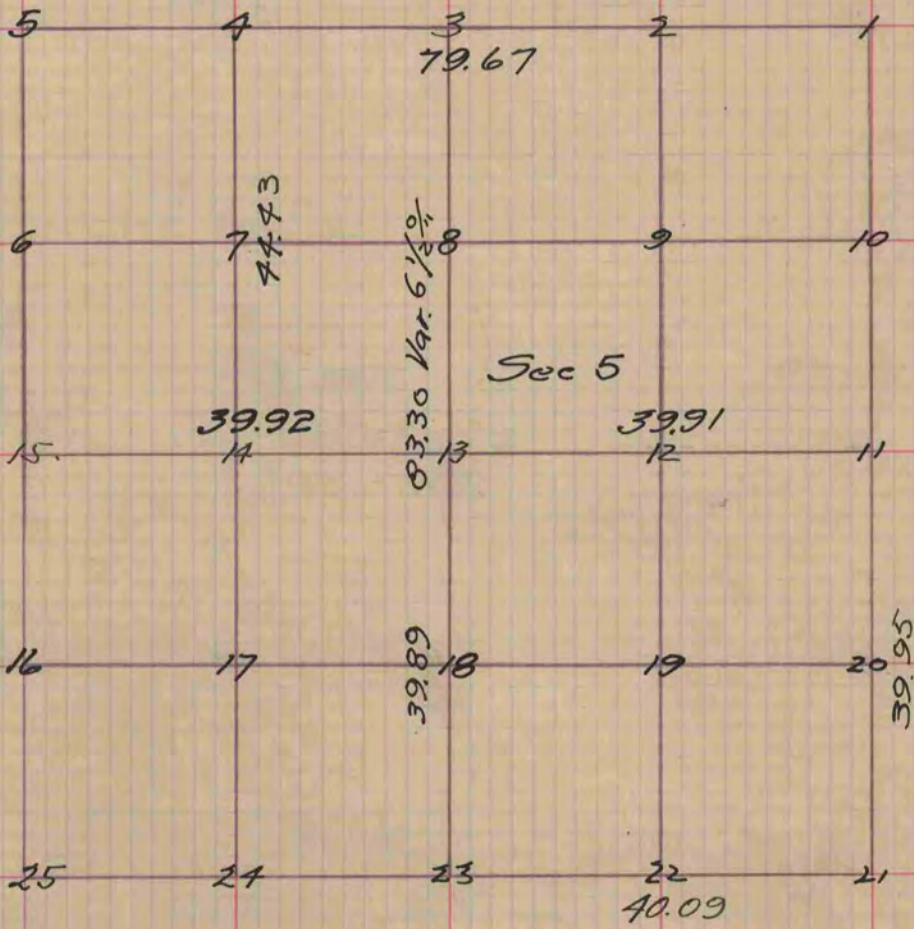


Figure 13 represents the centre of the Section,
 Figure 13 Buried a stone 15 inches long 10 wide 5 thick even
 with the surface of the ground
 Fig 12 Buried a stone 18 inches in sod fence

Copied from Page 20 Vol. 1. County Surveyors Record

X