

PLAT AND RECORD

189
V-1

MICROFILMED

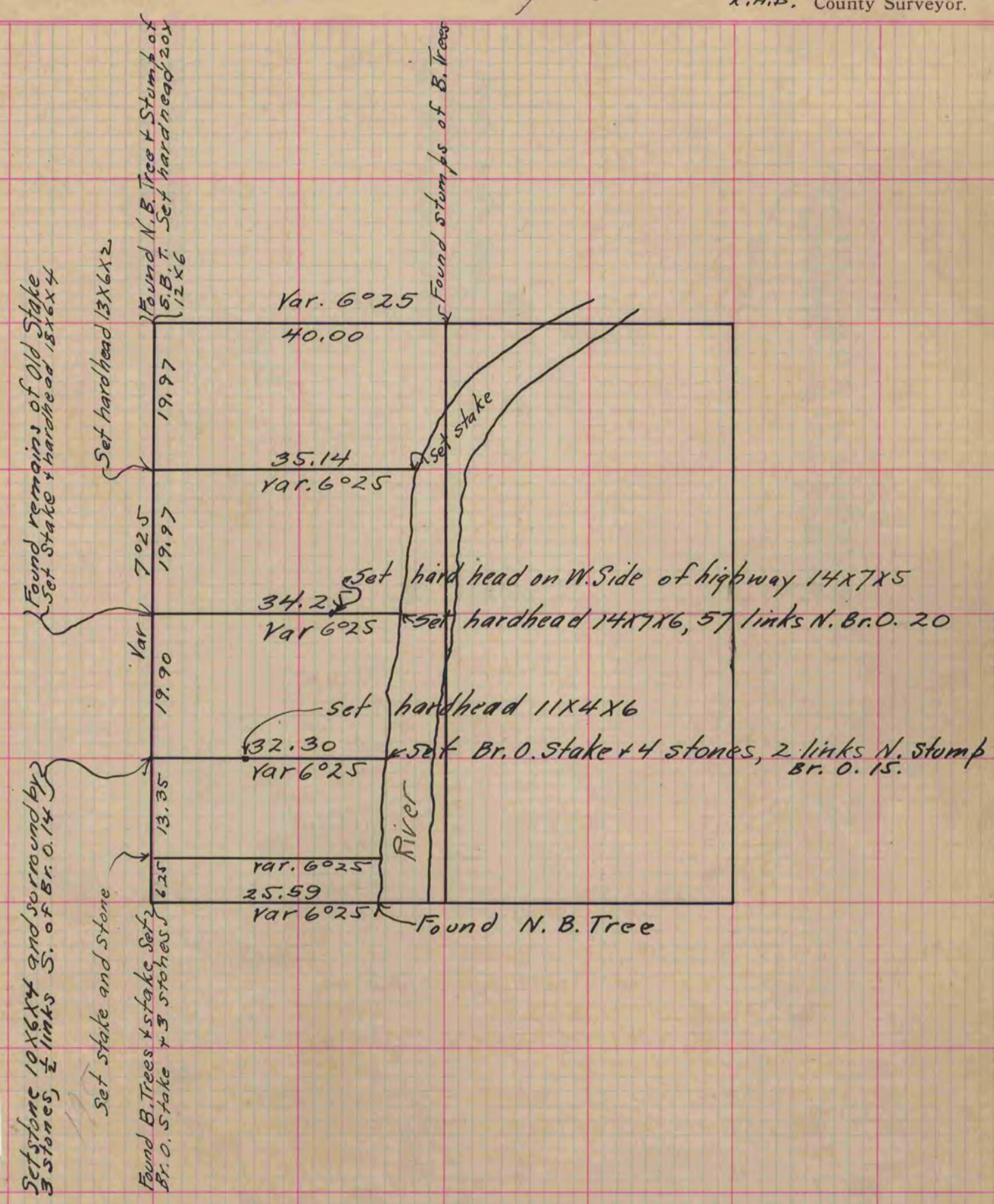
COUNTY BUILDING
CITY OF JANESVILLE

Of a Survey on Section 10 T 2 R 12 E. of the 4 P. M. in Rock Township

Rock County, Wisconsin, made the 1863

I hereby certify that the following is a correct record of said survey as made by me.

(Signed) S. P. Locke
R.H.B. County Surveyor.



Copied from upper part of page 195 Vol. 1. County Surveyors Record