

MICROFILMED

PLAT AND RECORD

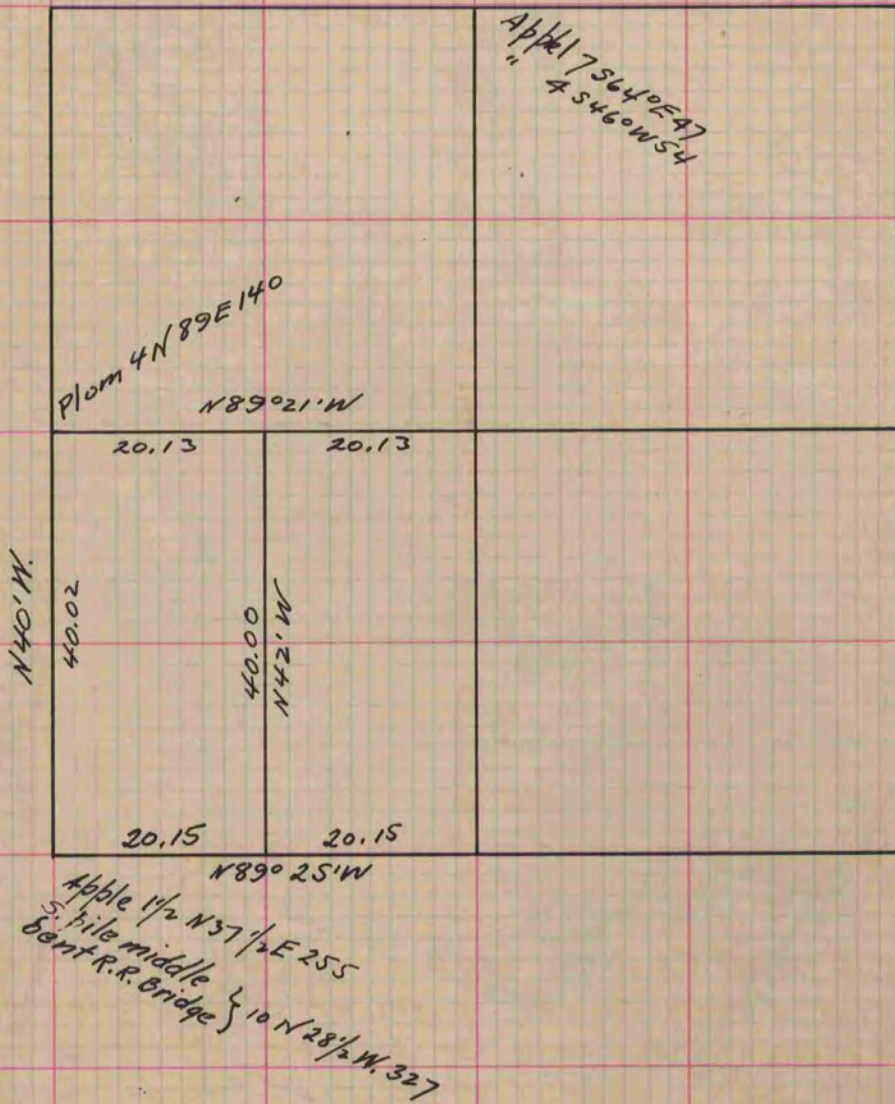
Of a Survey on Section 29 T / R 13 E. of the 4 P. M. in Turtle Township

Rock County, Wisconsin, made June the 10th 1859

I hereby certify that the following is a correct record of said survey as made by me.

COUNTY BUILDING
CITY OF JANESVILLE

(Signed) E. F. Hobart
R.H.D. Deputy County Surveyor.



Measurements in links
Variation 5°30'

Copied from Page 117 Vol. 1. Original County Surveyors Record