

V-7 MICROFILMED

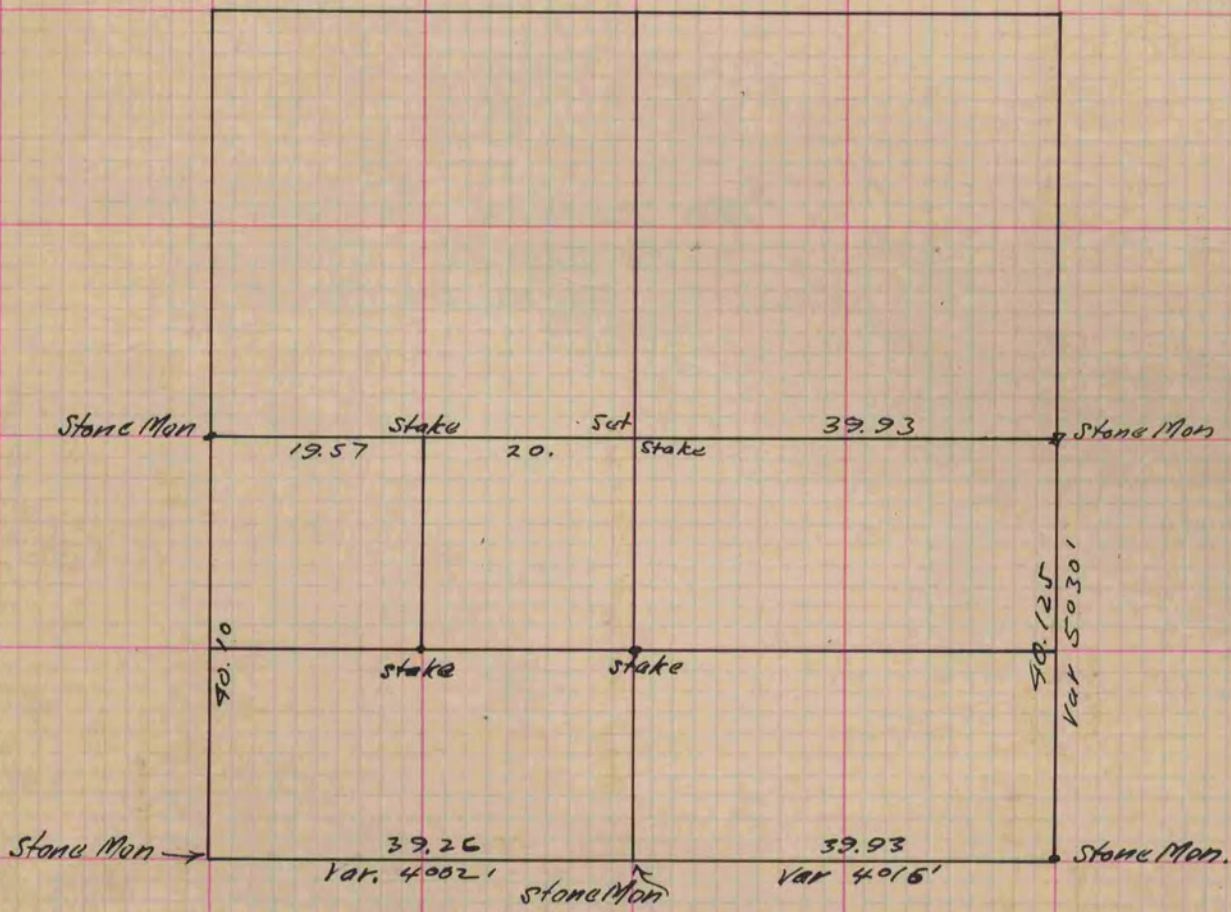
# PLAT AND RECORD

Of a Survey on Section 31 T 2 R 13 E. of the 4 P. M. in La Prairie Township  
Rock County, Wisconsin, made November the 18<sup>th</sup> 1881

I hereby certify that the following is a correct record of said survey as made by me.

COUNTY BUILDING  
CITY OF JANESVILLE

(Signed) John A. Holmes  
R.H.B. County Surveyor.



copied from p. 276 Vol. 2. County Surveyors Record