

332  
V-2 MICROFILMED

# PLAT AND RECORD

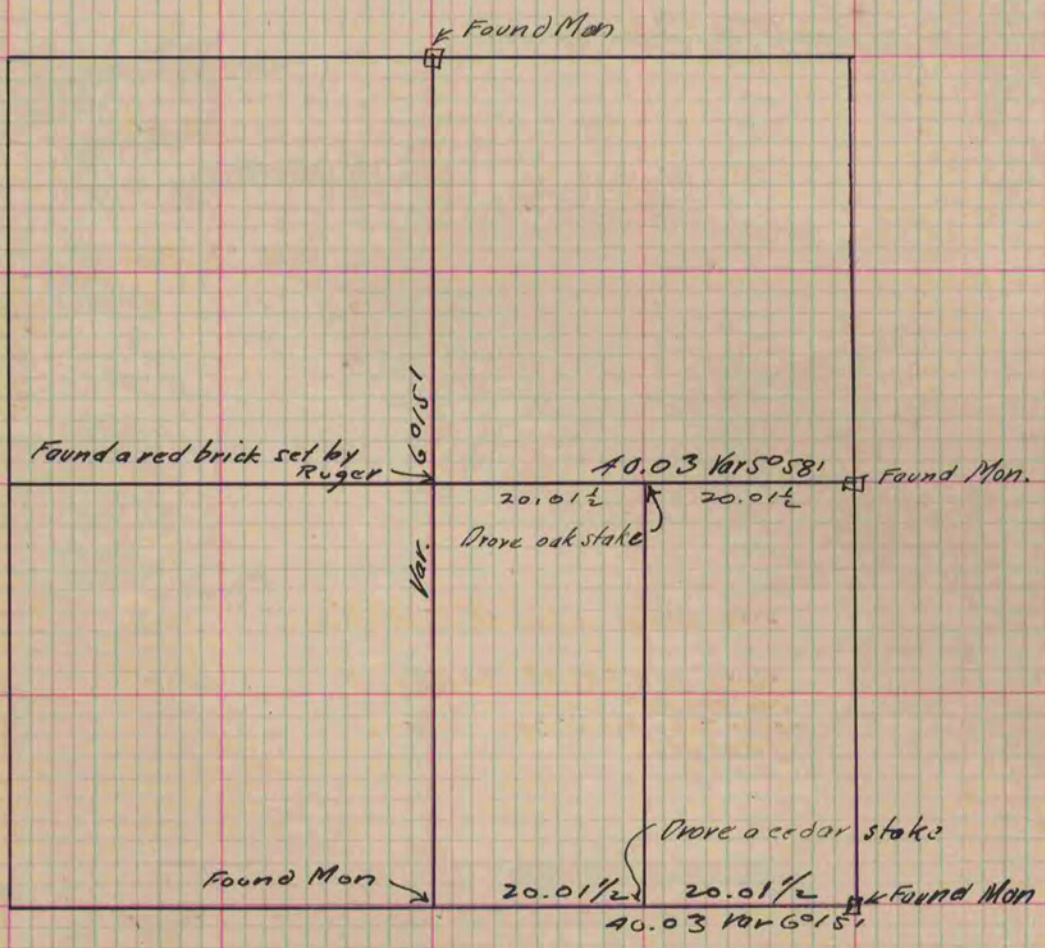
Of a Survey on Section 7 T 2 R 13 E. of the 4 P. M. in La Prairie Township

Rock County, Wisconsin, made September the 13<sup>th</sup> 1881

I hereby certify that the following is a correct record of said survey as made by me.

COUNTY BUILDING  
CITY OF JANESVILLE

(Signed) R. K. Lee  
R. H. B. County Surveyor.



Copied from P. 271 Vol. 2. County Surveyor's Record.