

MICROFILMED

# PLAT AND RECORD

V-3 359

PG 351 BELOIT  
REC 12/16/75  
DAB

Of a Survey on Section A T. 4N. R. 12 E. of the 4 P. M. in Fulton Township

Rock County, Wisconsin, made between June 28, & Dec. 3, 1937

I hereby certify that the following is a correct record of said survey as made by me.

COUNTY BUILDING  
CITY OF JANESVILLE

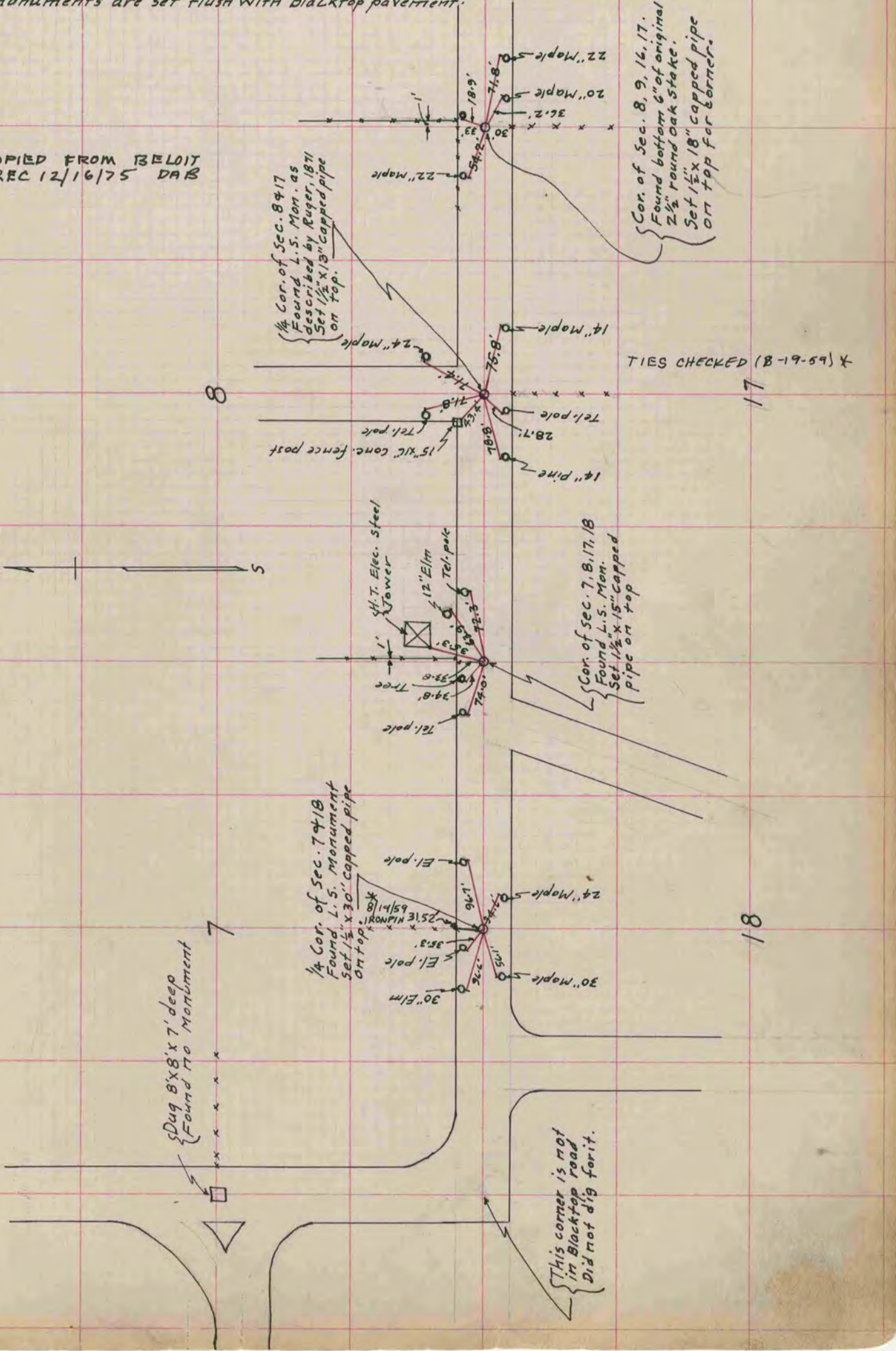
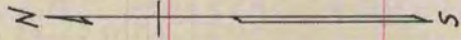
*B. J. Bunney*  
County Surveyor.

**NOTE:**

All references are to a 40d. spk. in poles and blazed trees, taken before the road was Black topped.

Pipe monuments are set flush with Blacktop pavement.

\* COPIED FROM BELOIT  
REC 12/16/75 DAB



Dug 8' x 8' x 7' deep  
{ Found no monument

This corner is not  
in Blacktop road  
Did not dig for it.

TIES CHECKED (B-19-59) X