

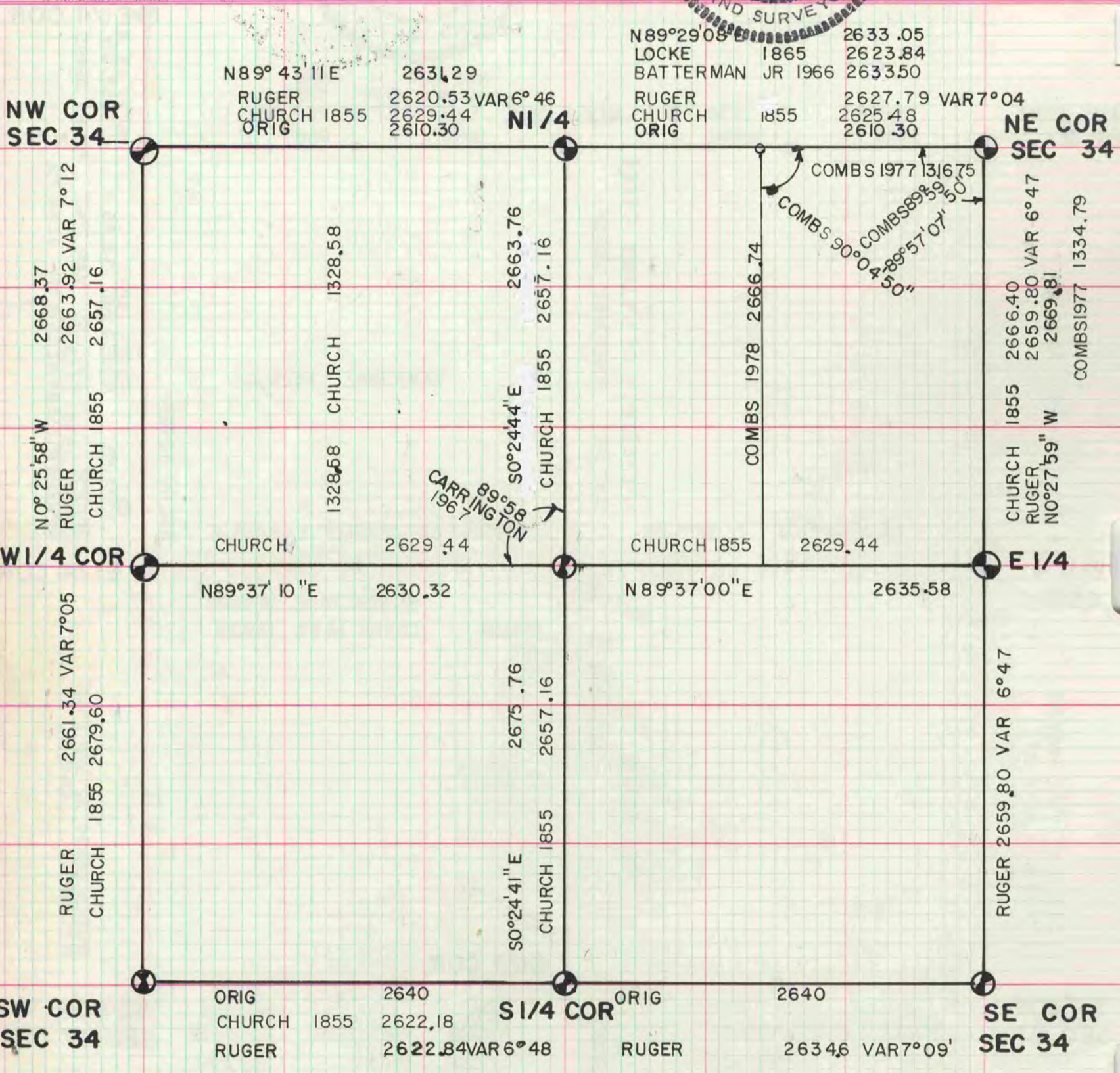
# PLAT AND RECORD

Of a Survey on Section 34 T. R. E. of the 4 P. M. in UNION Township

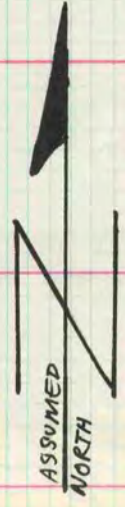
Rock County, Wisconsin, made APRIL the

I hereby certify that the following is a correct record of said survey as made by me.

COUNTY BUILDING  
CITY OF JANESVILLE



**MICROFILMED**



ALL CORNERS ARE DESCRIBED IN THE U.S. PUBLIC LAND SURVEY MONUMENT RECORDS