

PLAT AND RECORD

333

VOL. 6

Of a Survey on Section ^{17, 32, 23} 1, 2, 5, 8, 16 T 4 R 12 E. of the 4 P. M. in FULTON Township
 Rock County, Wisconsin, made the 1900

I hereby certify that the following is a correct record of said survey as made by me.

COUNTY BUILDING
 CITY OF JANESVILLE

Donald Barnes

County Surveyor.

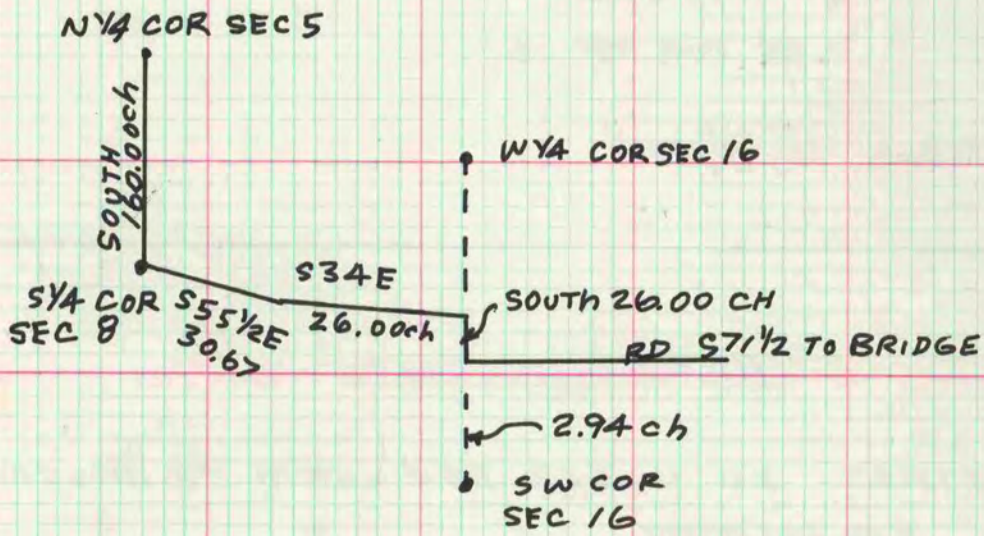
THE FOLLOWING ROAD RECORD INFORMATION IS FROM A BOOK THAT IS IN THE COUNTY CLERK'S VAULT. THE RECORDS ARE FROM 1840-1888. SOME OR ALL OF THE ROADS MAY NOT BE IN USE. THE BEARING AND DISTANCE OF THE CENTER LINE ARE RECORDED AS SURVEYED.

FULTON TWP T4N R12E

PAGE	SECTION	CORNER
56	1, 12	
59	5, 8, 16	
58	16, 17	
28	32	E 1/4
42, 43	23	E 1/4

3 ch 9 2 LK S
 S 84 1/2 W
 R/D ↙ • E 1/4 COR
 SEC 32

E 1/4 COR
 SEC 23
 ↙ 2 ROD ↘
 C.T.H. F



MICROFILMED

