

PLAT AND RECORD

33
V-3

MICROFILMED

6 - 2 - 13

La Prairie

Of a Survey on Section 10 T 3 R 12 E. of the 4 P. M. in Janesville Township

Rock County, Wisconsin, made April the 28th 1906

I hereby certify that the following is a correct record of said survey as made by me.

COUNTY BUILDING
CITY OF JANESVILLE

C. V. Herold

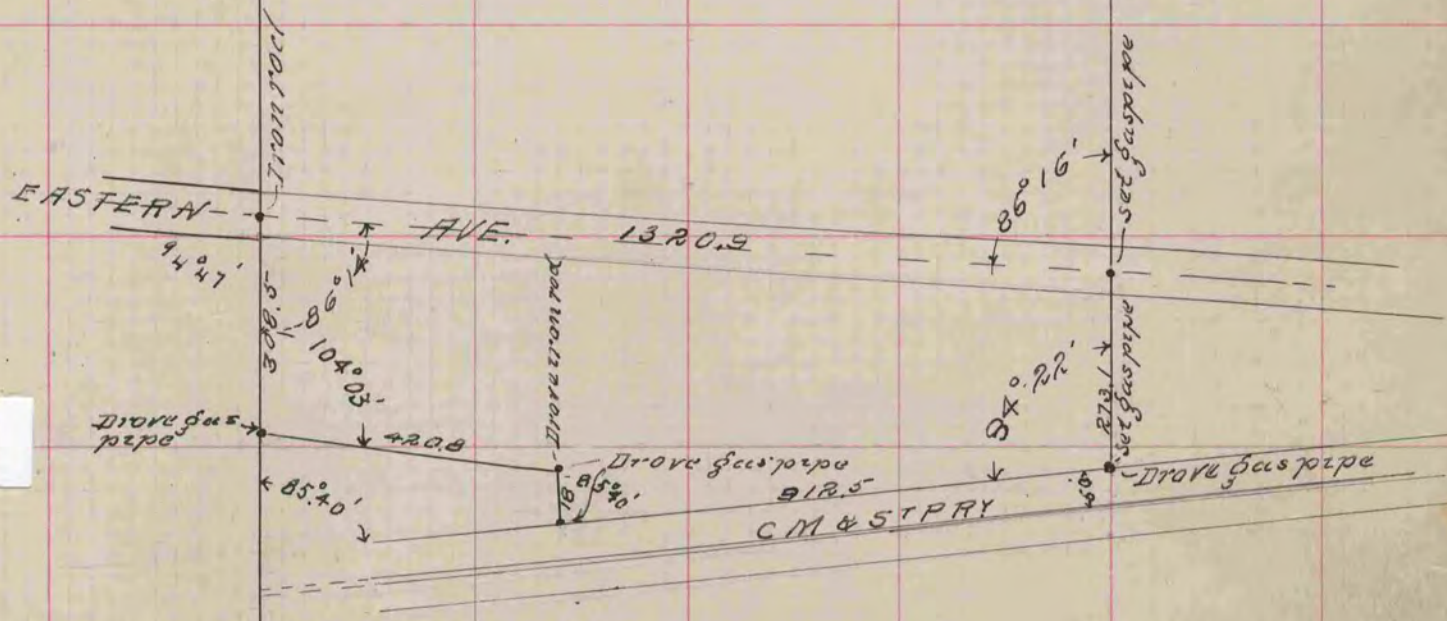
County Surveyor.

see page 32

No 30

Harmony

Monument 1/4 Sec Cor
N steel 500' of La Prairie
1319.9



Monument 55, Sec. 6