

MICROFILMED

PLAT AND RECORD

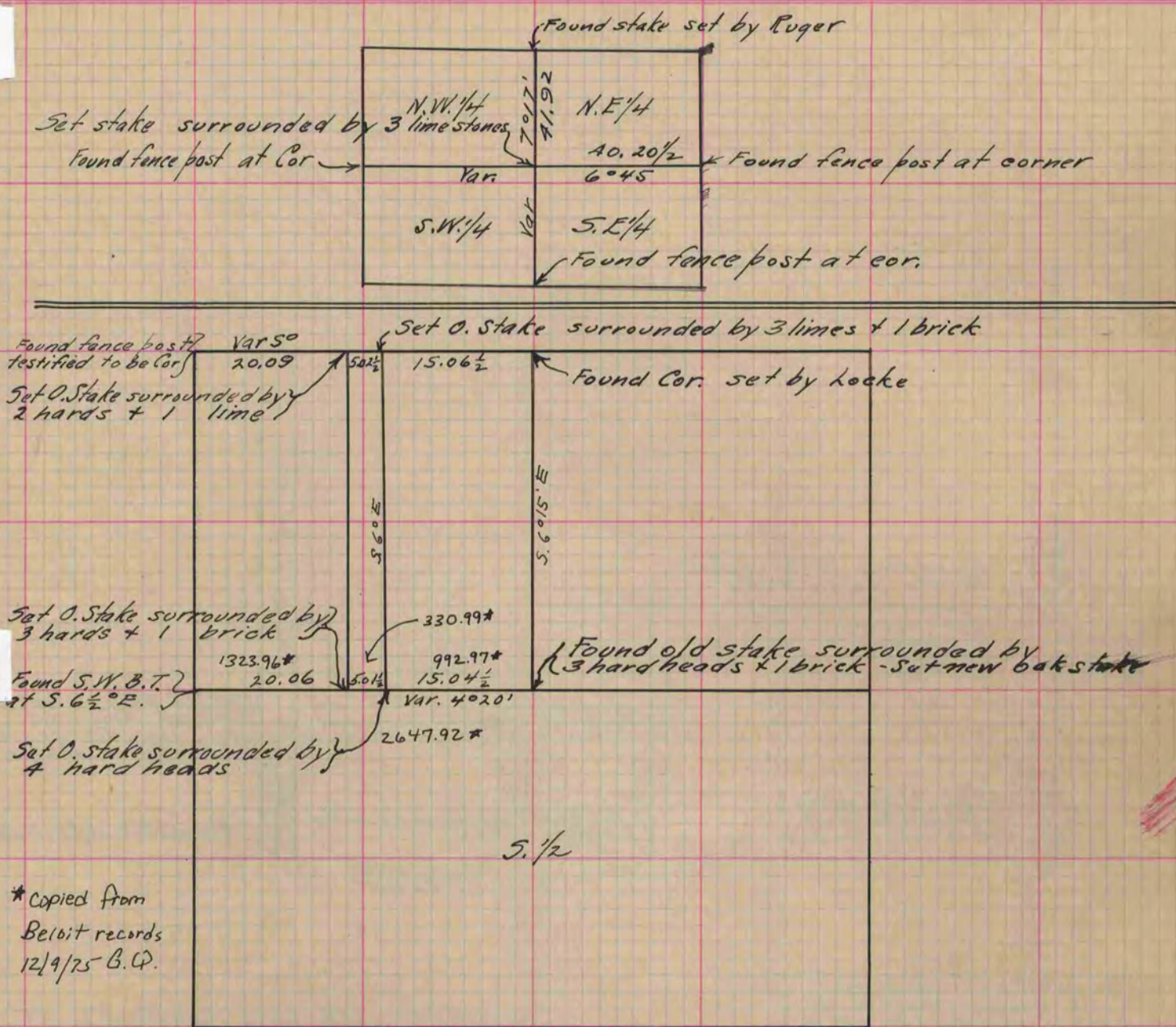
COUNTY BUILDING
CITY OF JANESVILLE

Of a Survey on Section 5 T 2 R 12 E. of the 4 P. M. in Rock Township

Rock County, Wisconsin, made July the 20th 1867

I hereby certify that the following is a correct record of said survey as made by me.

(Signed) R. K. Lee
R.H.B. Dep. County Surveyor.



The above is a correct Record & Plat of a Survey made by me Sept. 3^d 1868 on Sec. 15 T. 1. R. 13 - (TURTLE)

(Signed) R. K. Lee
R.H.B. Dep. Co. Surveyor

Copied from Page 273 Vol. 1. Original County Surveyors Record