

520  
V-2  
MICROFILMED

# PLAT AND RECORD

Of a Survey on Section 6 T 3 R 11 E. of the 4 P. M. in Center Township

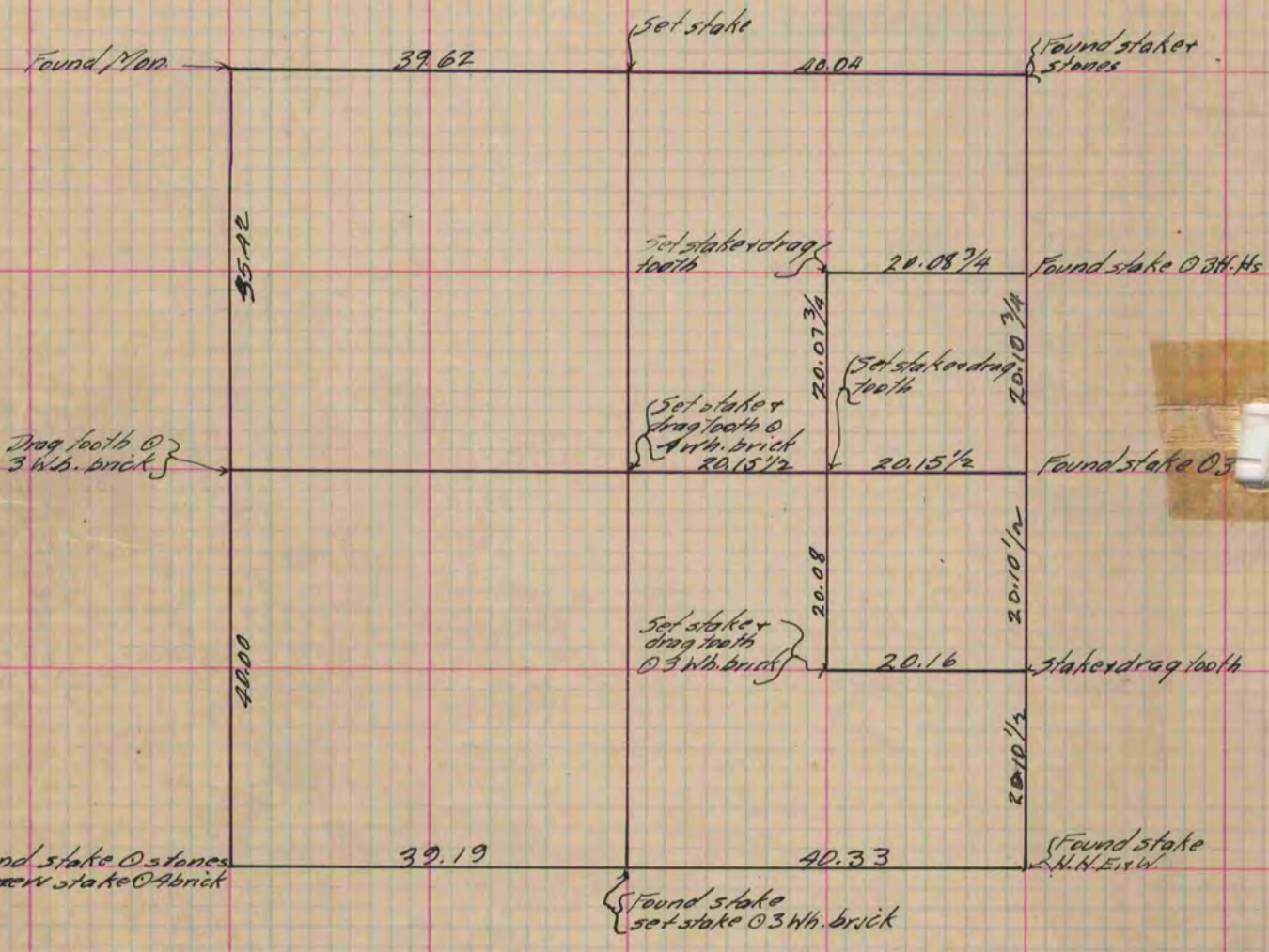
Rock County, Wisconsin, made Oct. the 12 1913

I hereby certify that the following is a correct record of said survey as made by me.

COUNTY BUILDING  
CITY OF JANESVILLE

(Signed) P.F. Brown  
R.H.B.

County Survey



(Copied from P. 393 Vol. 2 County Surveyor's Record)