

PLAT AND RECORD

521
V-2

MICROFILMED

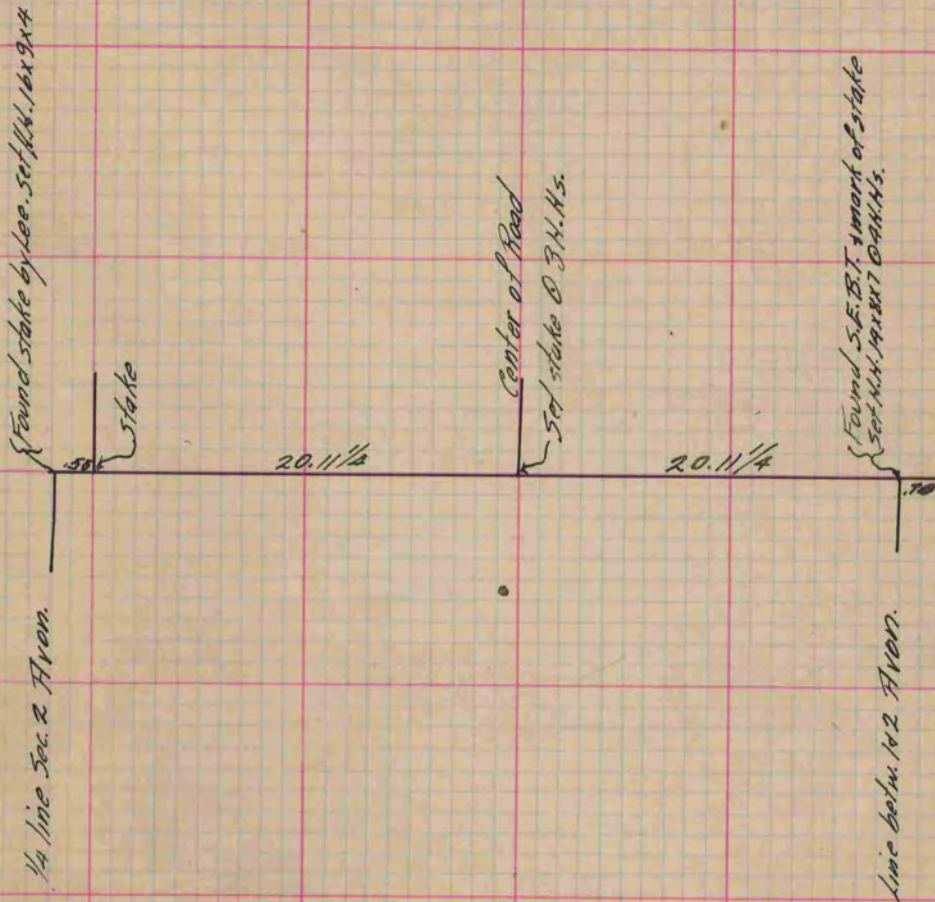
COUNTY BUILDING
CITY OF JANESVILLE

Of a Survey on Section 35 T 2 R 10 E. of the 4 P. M. in Spring Valley Township

Rock County, Wisconsin, made Nov the 12 1900

I hereby certify that the following is a correct record of said survey as made by me.

(Signed) P. F. Brown
R. H. B. County Surveyor.



Copied from P. 393 Vol. 2 County Surveyor's Record.