

502
 MICROFILMED PLAT AND RECORD

Of a Survey on Section (21) T 2 R 14 E. of the 4 P. M. in Bradford Township
 Rock County, Wisconsin, made April the 27 1894

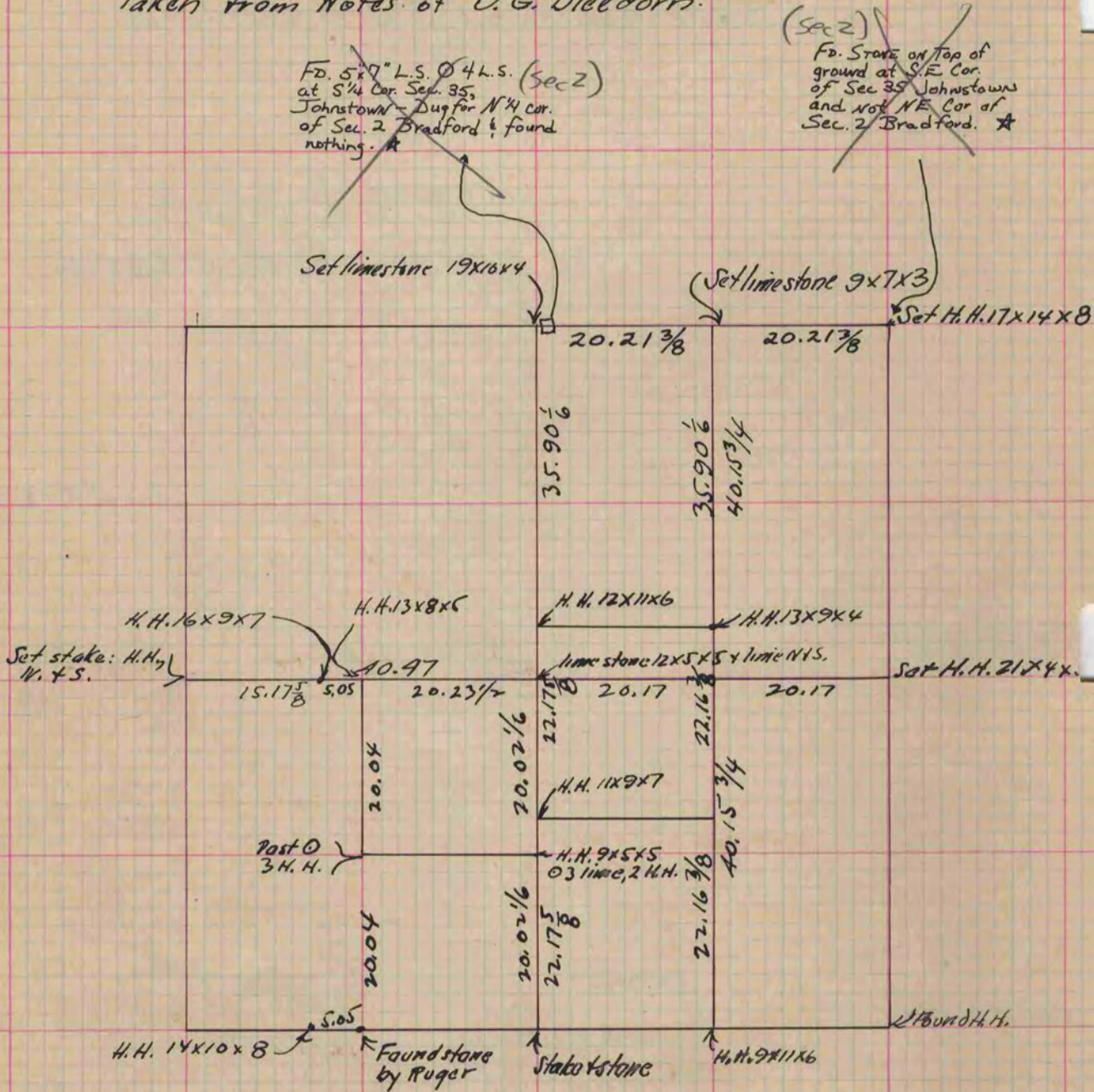
I hereby certify that the following is a correct record of said survey as made by me.

COUNTY BUILDING
 CITY OF JANESVILLE

(Signed) P. F. Brown
 R.N.B.

County Surveyor.

Taken from Notes of O. G. Bleedorn.



★ Copied from Beloit Records
 12/11/75
 G.O.

Copied from P.383 Vol. 2 County Surveyors record