

# PLAT AND RECORD

COUNTY BUILDING  
CITY OF JANESVILLE

Of a Survey on Section 5, 3 T 4 N R 12 E. of the 4 P. M. in FULTON Township

Rock County, Wisconsin, made NOV the 22-23 1976

I hereby certify that the following is a correct record of said survey as made by me.

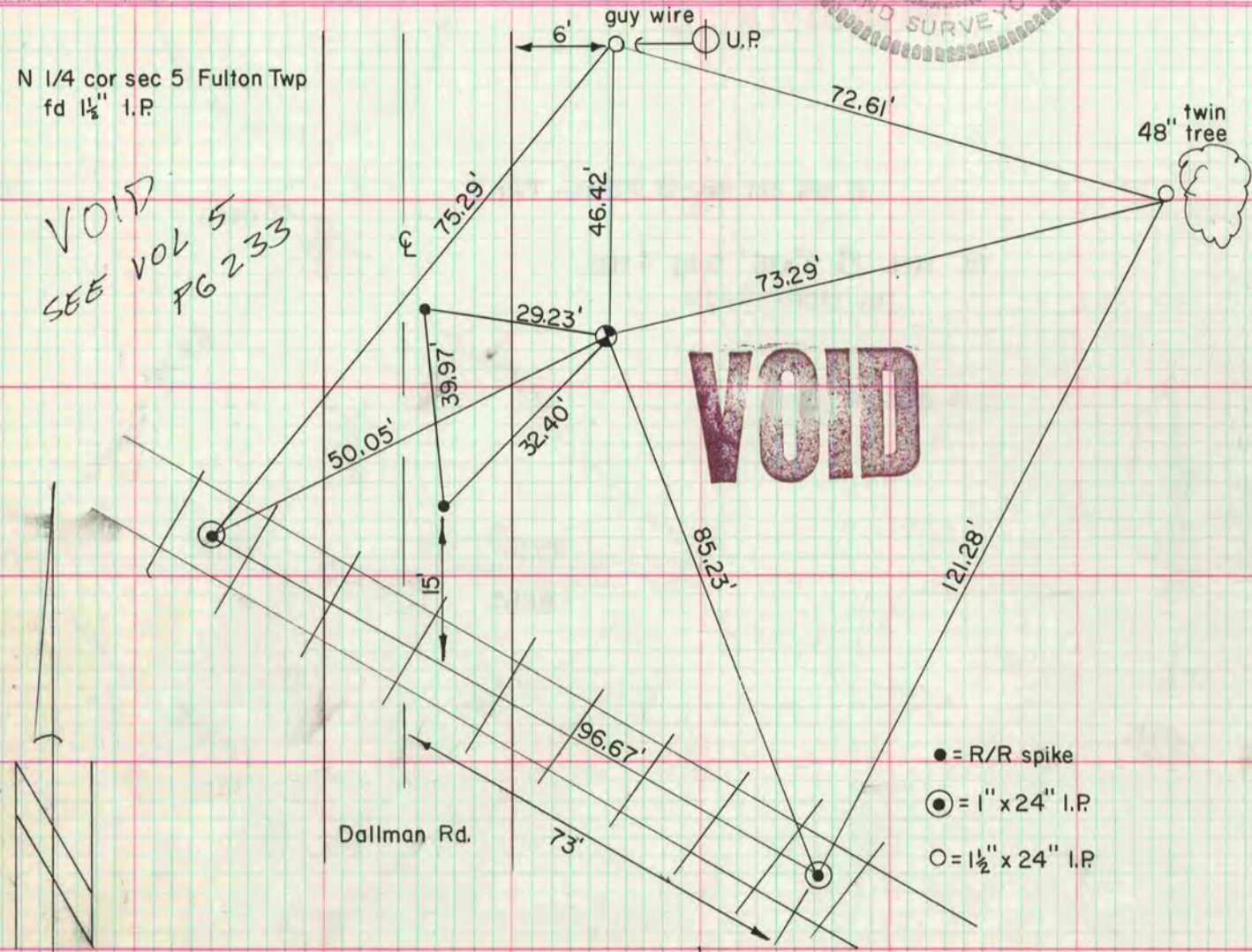
**MICROFILMED**



N 1/4 cor sec 5 Fulton Twp  
fd 1 1/2" I.P.

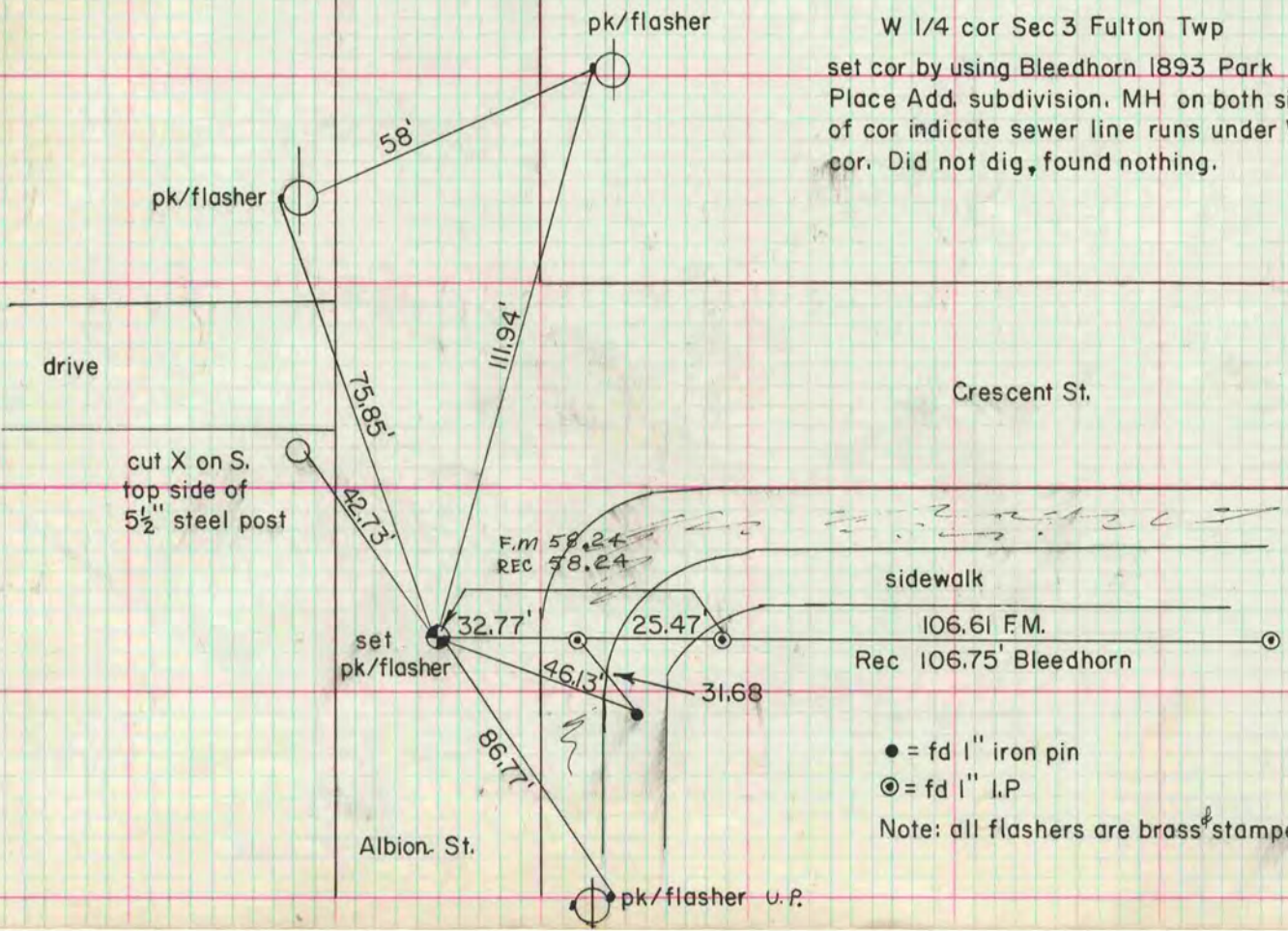
VOID  
SEE VOL 5  
PG 233

**VOID**



- = R/R spike
- ⊙ = 1" x 24" I.P.
- = 1 1/2" x 24" I.P.

W 1/4 cor Sec 3 Fulton Twp  
set cor by using Bleedhorn 1893 Park  
Place Add. subdivision. MH on both sides  
of cor indicate sewer line runs under W 1/4  
cor. Did not dig, found nothing.



- = fd 1" iron pin
  - ⊙ = fd 1" I.P.
- Note: all flashers are brass stamped RCSM