

# PLAT AND RECORD

V-2

**MICROFILMED**

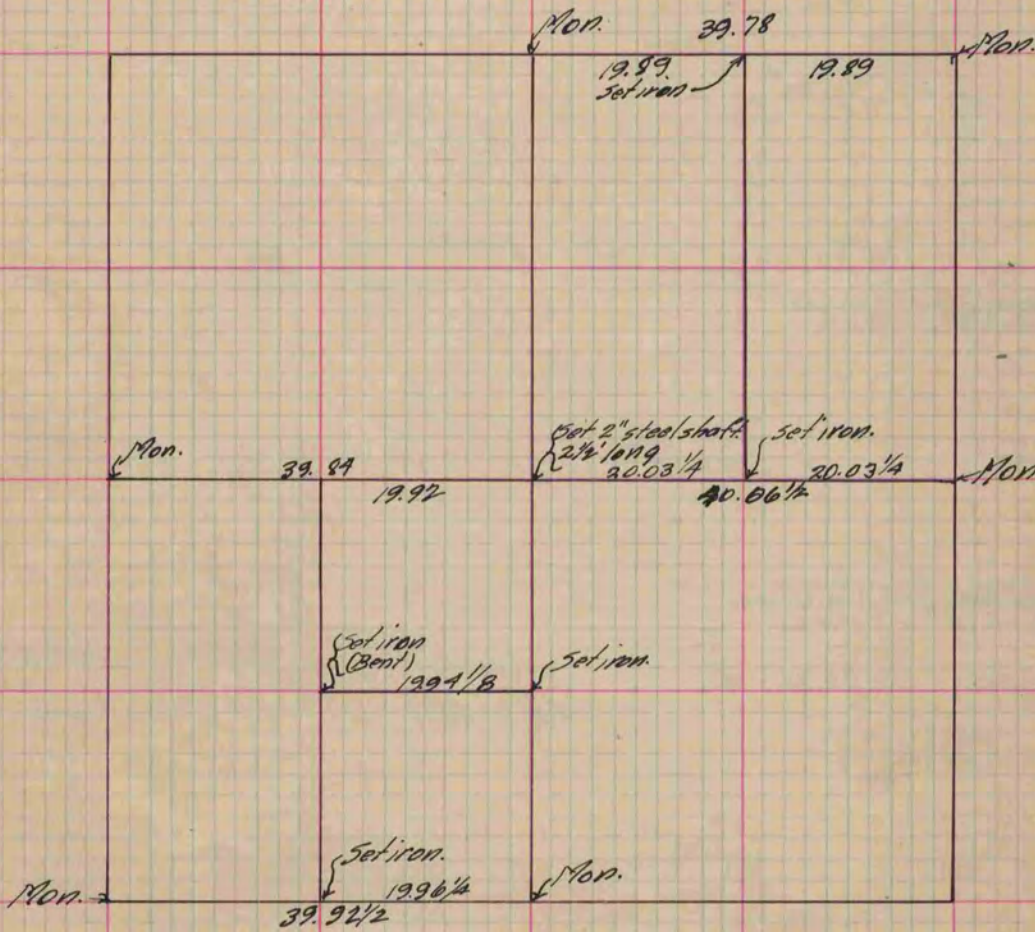
Of a Survey on Section 32 T 4 R 10 E. of the 4 P. M. in Union Township

Rock County, Wisconsin, made Sept. the 28 1900

I hereby certify that the following is a correct record of said survey as made by me.

COUNTY BUILDING  
CITY OF JANESVILLE

(Signed) Perry F. Brown  
R. 413 County Surveyor.



Copied from P. 392 Vol. 2 County Surveyor's Record.