

PLAT AND RECORD

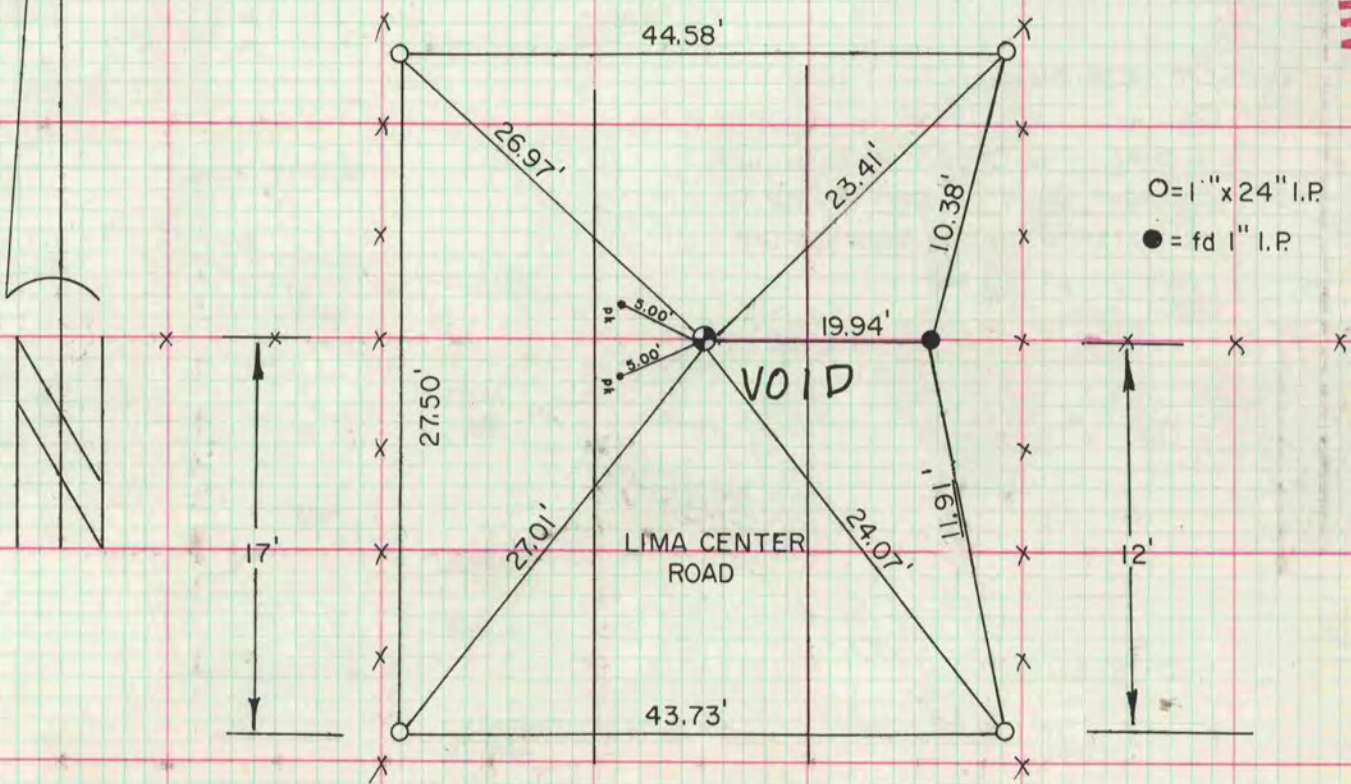
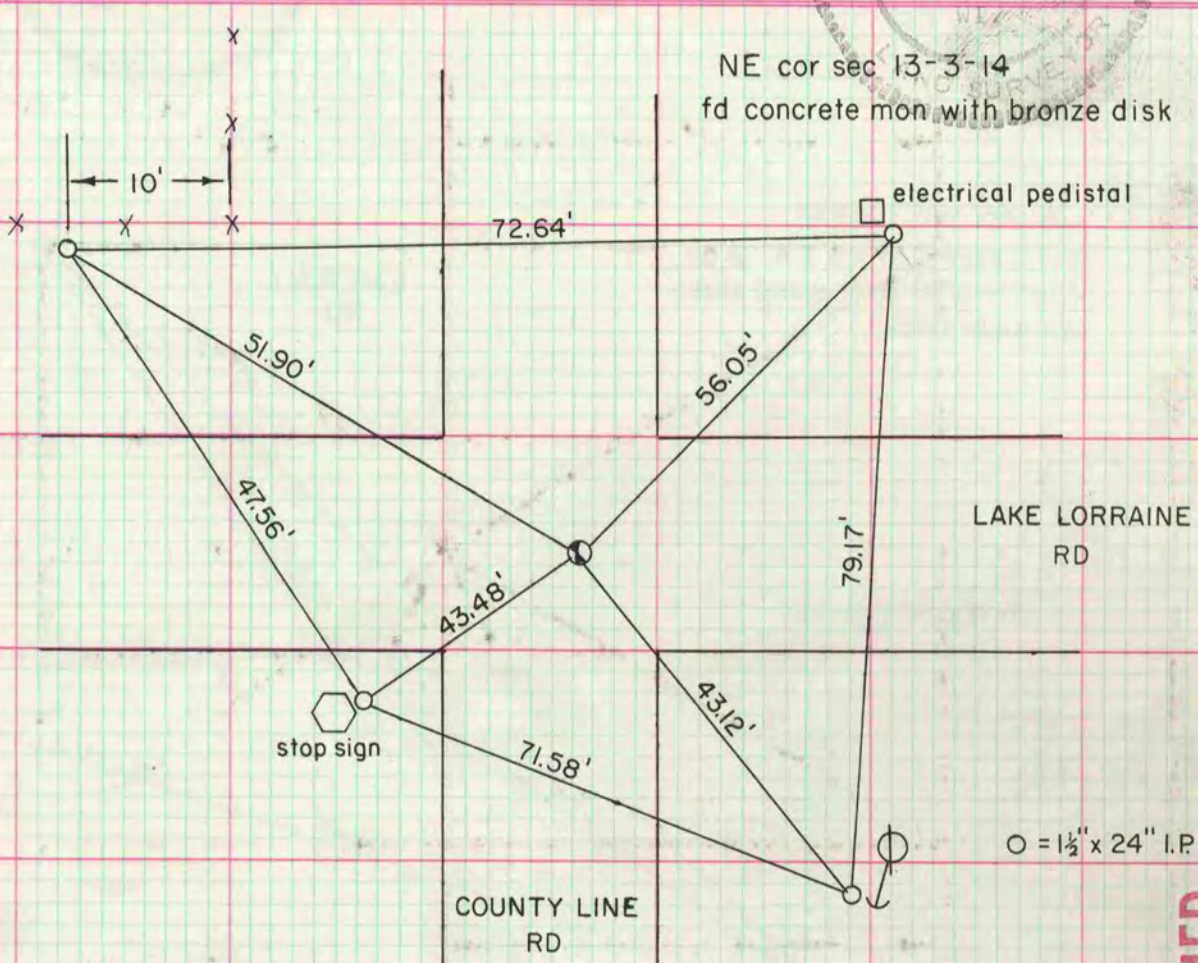
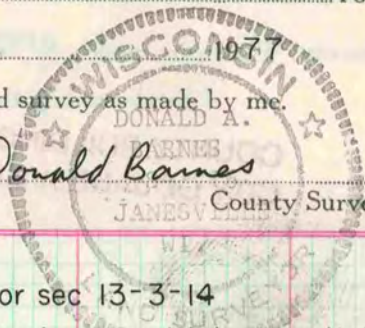
281
VOL. 5

Of a Survey on Section 13, 15 T 3 R 14 E. of the 4 P. M. in JOHNSTOWN Township
Rock County, Wisconsin, made APRIL the 22 1977

I hereby certify that the following is a correct record of said survey as made by me.

COUNTY BUILDING
CITY OF JANESVILLE

Donald Baines
County Surveyor.



MICROFILMED

N 1/4 cor sec 15-3-14
fd red sandstone 19"x12"x 6".
rec HH 12"x 8"x 4" O by 4 HH and 1 limestone
sef alum mon. VOID

SEE VOL 5 Page 327