

74
V-2

MICROFILMED

PLAT AND RECORD

Of a Survey on Section *14* T *1* R *10* E. of the 4 P. M. in *Avon* Township

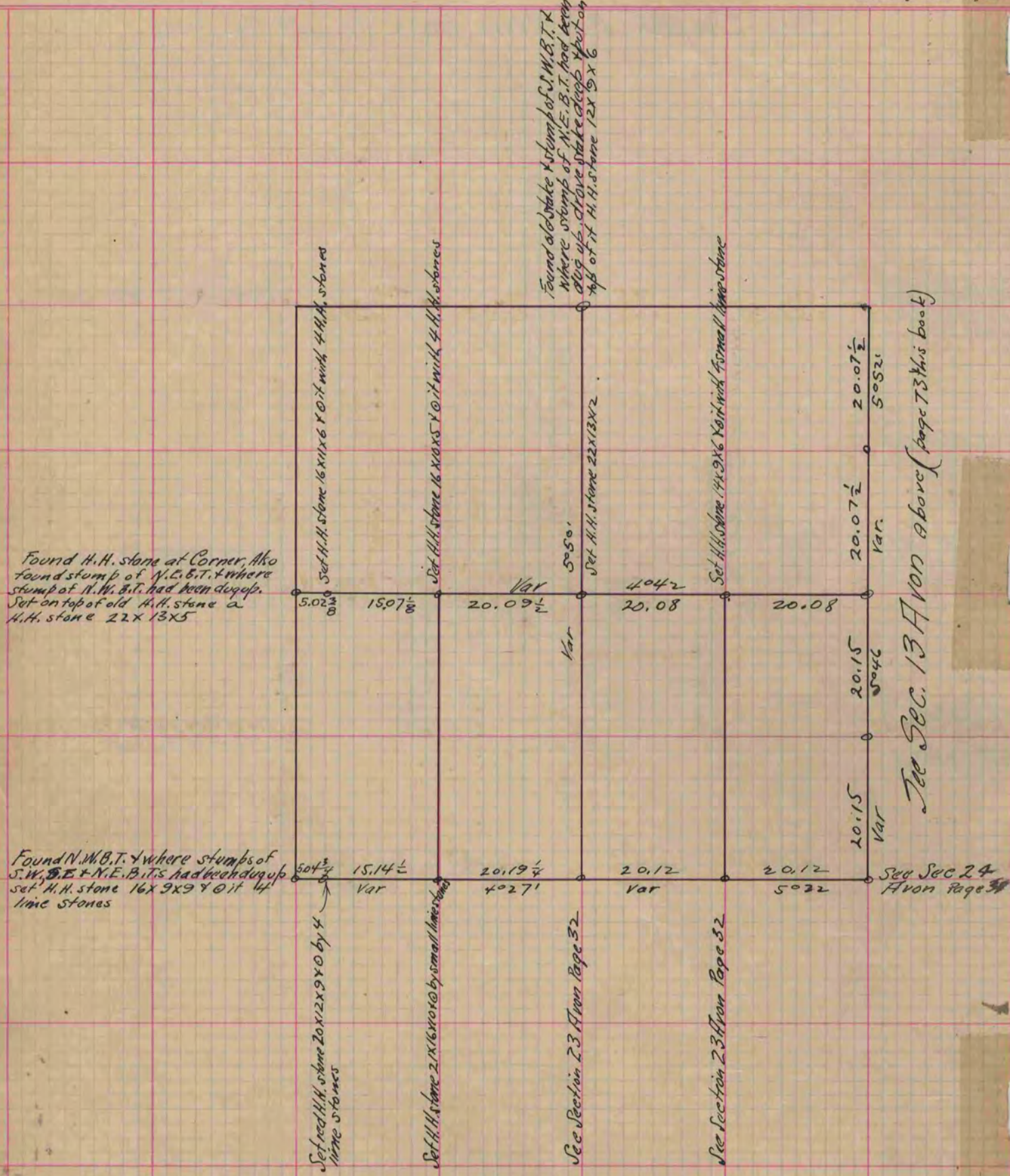
Rock County, Wisconsin, made *October* the *4* 1871

I hereby certify that the following is a correct record of said survey as made by me.

COUNTY BUILDING
CITY OF JANESVILLE

(Signed) *Edward Roger*
R. H. B.

County Surveyor.



Copied from Page 44 Vol. 2. Original County Surveyors Record