

PLAT AND RECORD

MICROFILMED

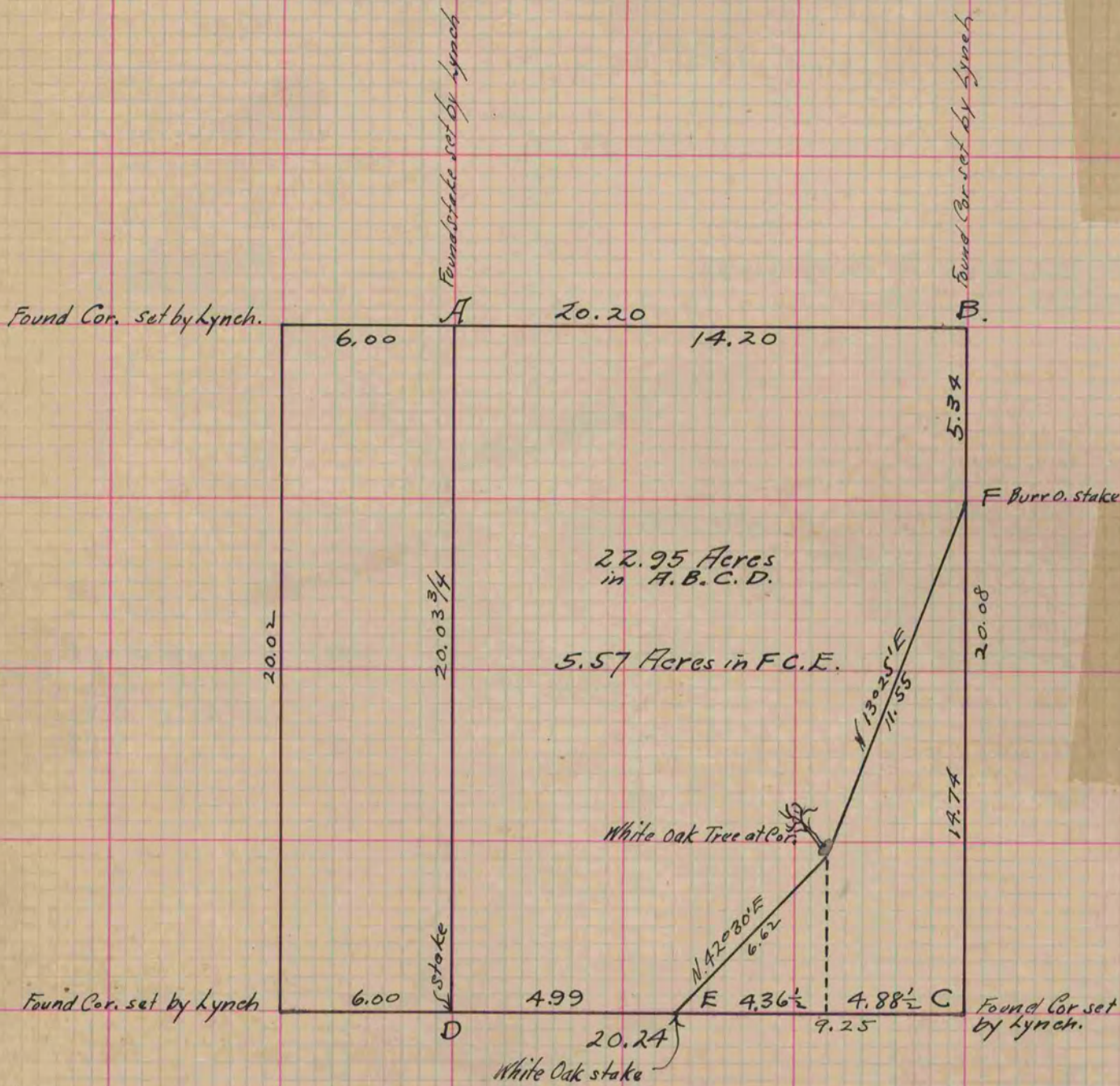
s.w. 1/4 NE 1/4 of Section 14 T 3 R 12 E. of the 4 P. M. in Janesville Township

Rock County, Wisconsin, made June the 9th 1873

I hereby certify that the following is a correct record of said survey as made by me.

COUNTY BUILDING
CITY OF JANESVILLE

(Signed) R. K. Lee
R. H. B. Deputy
County Surveyor.



Copied from Page 62 Vol. 2 Original County Surveyors Record