

MICROFILMED PLAT AND RECORD

149

V-2

COUNTY BUILDING
CITY OF JANESVILLE

Of a Survey on Section 31 T 1 R 13 E. of the 4 P. M. in Turtle Township

Rock County, Wisconsin, made July the 23 1874

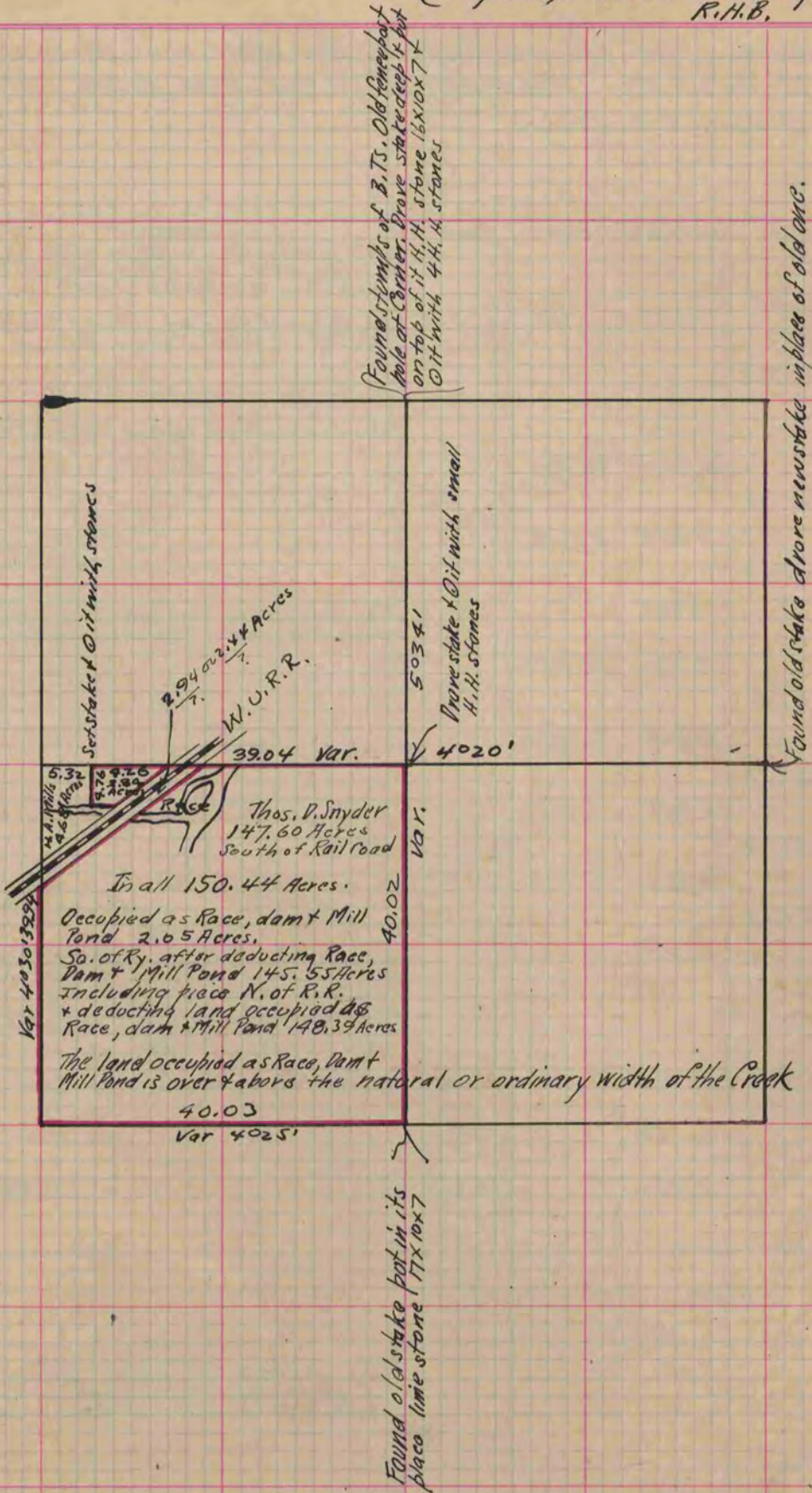
I hereby certify that the following is a correct record of said survey as made by me.

(Signed) Edward Ruger

R.H.B.

County Surveyor.

For corners on this line see Sec. 36 Beloit Page 105



Copied from page 106 Vol. 2. Original County Surveyor's Record.