

MICROFILMED

PLAT AND RECORD

Of a Survey on Section 26 T 4 R 13 E. of the 4 P. M. in Milton Township

Rock County, Wisconsin, made April the 24 1895

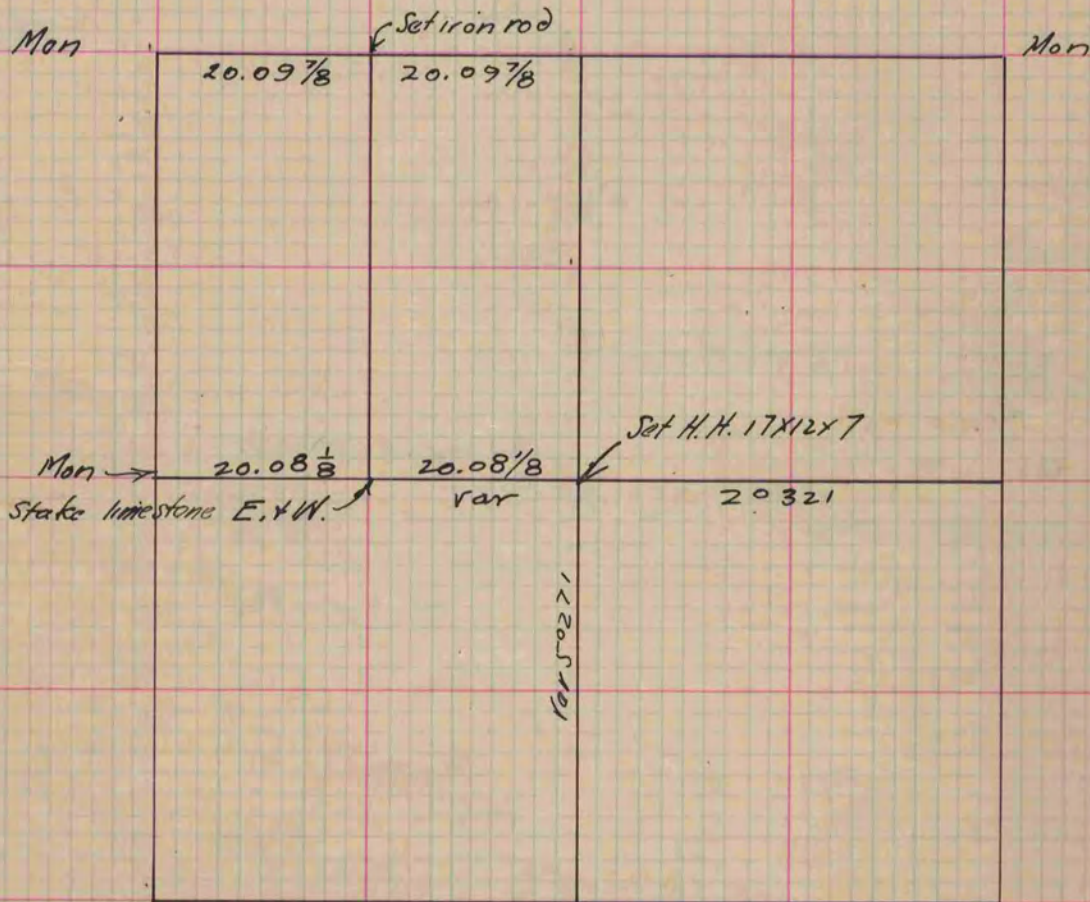
I hereby certify that the following is a correct record of said survey as made by me.

COUNTY BUILDING
CITY OF JANESVILLE

(Signed) P. F. Brown
P.H.B.

County Surveyor

Bleedorn Survey



Copied from P. 379 Vol. 2. County Surveyors Record.