

MICROFILMED

PLAT AND RECORD

Of a Survey on Section ^{S.W. 1/4} 3 T 4 R 12 E. of the 4 P. M. in Fulton Township

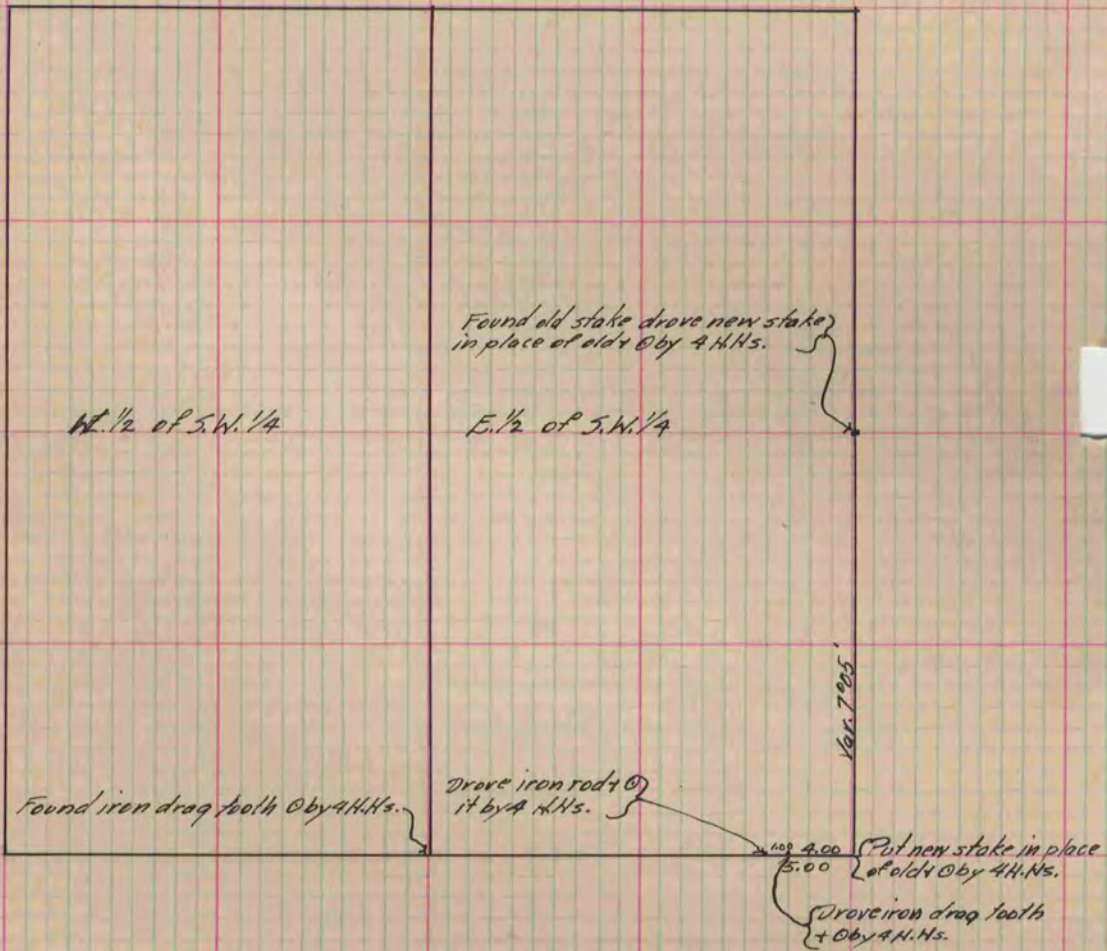
Rock County, Wisconsin, made the 19

I hereby certify that the following is a correct record of said survey as made by me.

COUNTY BUILDING
CITY OF JANESVILLE

(Signed) Edward Ruger
R.H.B.

County Surveyor.



Copied from P. 324 Vol. 2 County Surveyor's Record.